

# TURTLE AV CHAZY SWITCHER FOR CRESTRON HOME

Revision: 1.0

Date: 20 March 2026

## SUPPORTED INSTALLATION

This is a Crestron Home driver for Crestron Home processors.

## DESCRIPTION

This driver integrates Turtle's Chazy Control and Chazy Control Pro model AV switchers into Crestron Home. This is only compatible with 4 series processors.

## INSTALLATION

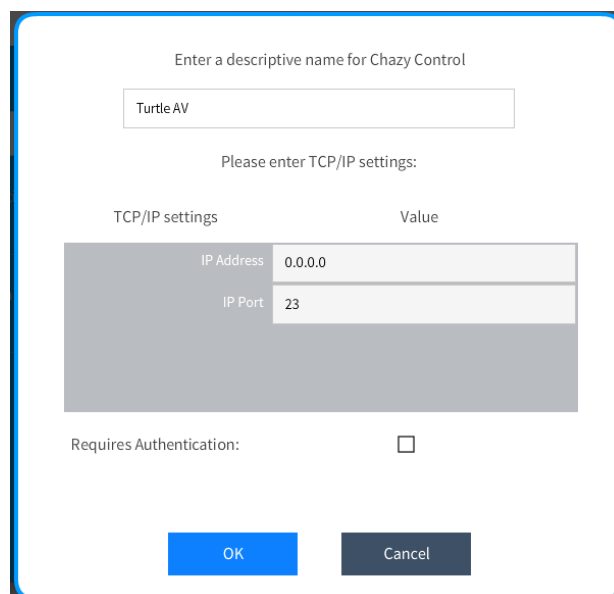
The driver can be found under:

Drivers > AV Switcher > Turtle

### Adding the Driver

Ensure a room is selected, and then click on the '+' against the appropriate device.

You will be asked to provide a descriptive name – this can be anything you wish.

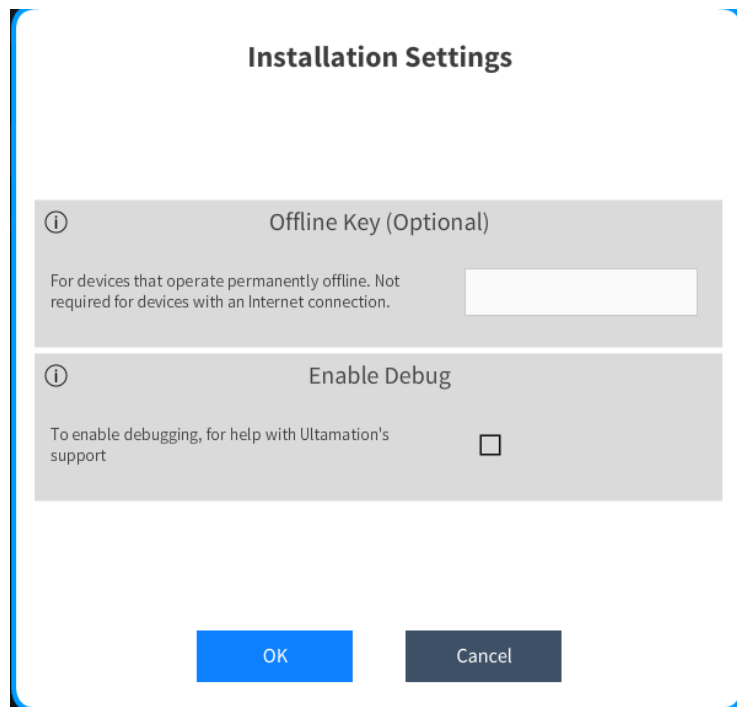


The screenshot shows a configuration dialog box for the Turtle AV Chazy Switcher. At the top, it says "Enter a descriptive name for Chazy Control" with a text input field containing "Turtle AV". Below this, it says "Please enter TCP/IP settings:". There is a table with two columns: "TCP/IP settings" and "Value". The table has two rows: "IP Address" with value "0.0.0.0" and "IP Port" with value "23". Below the table, there is a checkbox labeled "Requires Authentication:" which is currently unchecked. At the bottom, there are two buttons: "OK" and "Cancel".

TCP/IP settings	Value
IP Address	0.0.0.0
IP Port	23

The port should be left at 23.

The driver is licenced via the cloud, but an optional "offline" key can be requested under special circumstances. Please FIRST refer to the "Licensing" section below and then contact [support@ultamation.com](mailto:support@ultamation.com) if you REQUIRE offline activation. The same offline key can be used for multiple driver instances in the same system.



If you do not have a cloud licence and do not enter a valid offline licence key, the system will function for ONE hour and then control will be suspended. The offline licence key can be entered at any time after initial setup without having to reconfigure each tile.

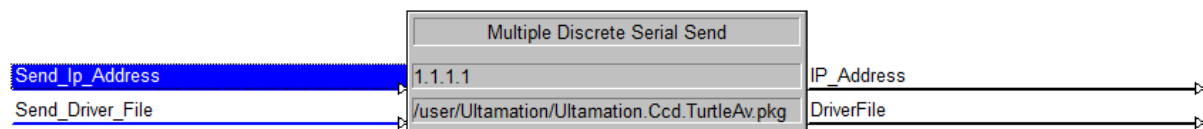
Here is also the option to enable debugging, this should only be used for support cases with Ultamation, enabling it can cause the processor's logs to be filled up very quickly.

## SIMPL Wrapper Example

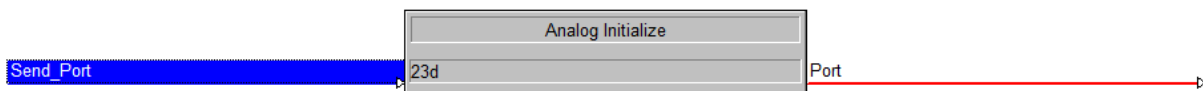
The driver can be used in Crestron Custom using the Crestron Device Drivers AV Switcher Ethernet module under the Crestron Device Drivers folder. There is an example program available on our shop which demonstrates how to use it.

### Setup

The `Ultamation.Ccd.TurtleAv.pkg` file needs to be loaded onto the processor and then the path to this file on the processor needs to be sent into the **DriverFile** signal on the module. Make sure you have set **UseDefaultDirectory** to false if you have placed it inside a custom location on the processor.

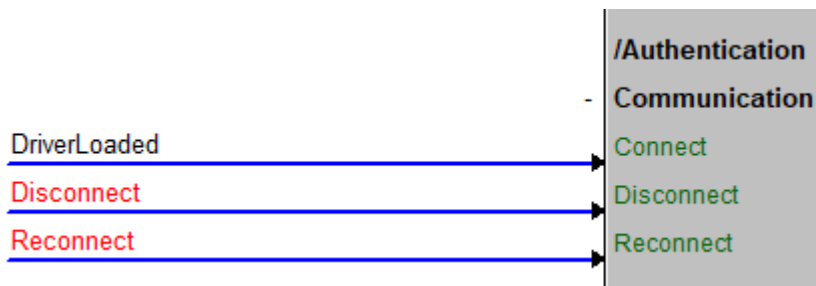


The port should be set to 23.



There are two user attributes. One being the "Offline Key" field as described above and mentioned in the Licencing section. This will be left blank most of the time. The other being an option to enable debugging as explained above.

The Connect signal will need to be raised after the driver is loaded for the connection to start.



You can use up to 250 inputs and outputs in the SIMPL Wrapper, Crestron Home has a lower limit.

## SUPPORT

If you have any issues with an integration solution please let us know by contacting Ultamation support on [support@ultamation.com](mailto:support@ultamation.com) and please include as much detail about your issue as possible, such as a recent processor error log.

Licence verification messages are posted to the error log, so please ensure you have checked this.

## LICENCING

This integration solution (including software, images and all other associated assets distributed as part of the purchased download package) is licenced on a PER PROCESSOR basis.

A purchase should not be completed without correct information as refunds cannot be issued for errors or changes made to details following purchase.

This is an electronic product and there is no physical delivery.

The integration solution is provided without any warranty with respect to the reliability of the controlled device or changes to device protocol. We will endeavour, through best efforts, to maintain the integration solution's functionality and any bug fixes will be provided free-of-charge. Additional functionality may be released as a variation of this integration solution and this will be a separate, purchasable, product.

## CLOUD LICENCE

This integration solution contacts Ultamation's licencing server at startup. If the server finds a matching licence for the integration solution and processor then the integration solution will be licenced. Otherwise, the integration solution will check the offline licence key. If you purchase a licence **after** you have loaded the integration solution, please reboot the system to see changes take effect.

If you purchased a licence **before** it was migrated to the cloud service, i.e. you have a licence key already, you must enter this into the **Offline Key** user attribute. If you purchased the integration solution **after** it was migrated, and you don't have a licence key, no further action is required.

If no licence exists for the product/processor the integration solution will enter a short trial period (ONE HOUR) to allow for verification of correct control or evaluation.

To request an OFFLINE key, please contact [support@ultamation.com](mailto:support@ultamation.com) with your order details and a brief explanation why you REQUIRE offline activation. Ultamation reserve the right to refuse offline activation.

**NOTE:** Once an offline key has been issued no further licence changes will be granted. Moving the integration solution to a new processor will require an additional licence purchase.