

CYP IP-CS7 FOR CRESTRON HOME

Revision: 1.0

Date: 16 September 2025

SUPPORTED INSTALLATION

This is a driver for Crestron Home processors.

DESCRIPTION

This driver allows for the use of CYP's IP-CS7 System Controller and Configurator to route video and audio sources to single outputs as well as run predefined macros and predefined video walls. The driver currently supports the use of 20 inputs and 50 outputs as well as using 16 video wall presets and 16 macros. The device should first be set up using the IP-CS7s web interface.

This driver supports the following transmitters: IP-7000TX, IP-7000C-TX, IP-7000H-TX, IP-A750-TX (audio only). This also supports the following receivers: IP-7000RX and the IP-A750RX (audio only).

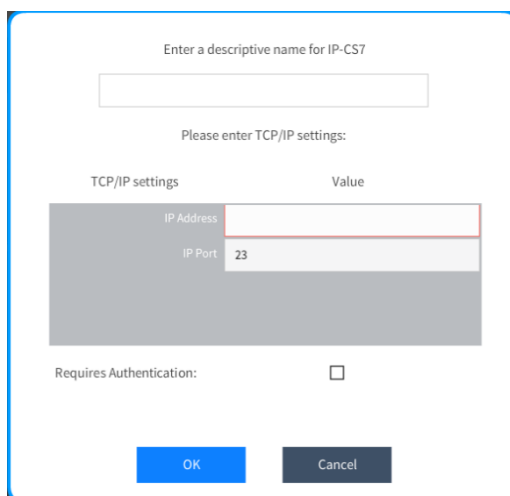
INSTALLATION

The driver can be found under:

Drivers > AV Switcher > CYP

Adding the Driver

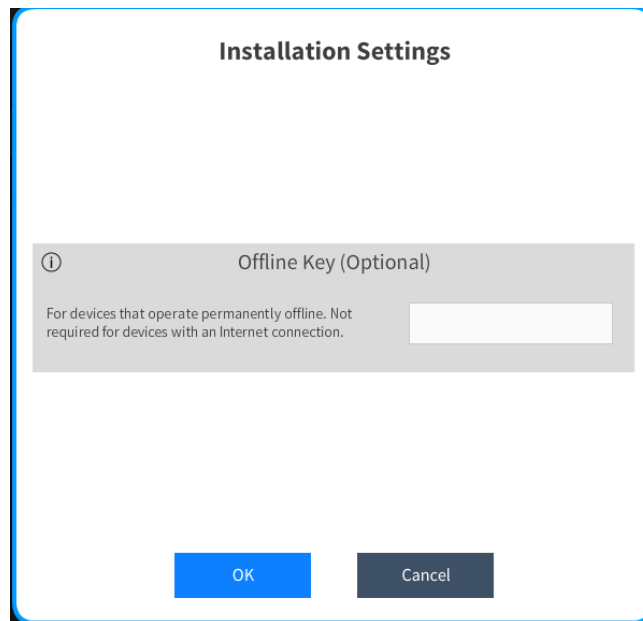
Ensure a room is selected, and then click on the '+' against the appropriate device.



TCP/IP settings	Value
IP Address	<input type="text"/>
IP Port	23

You will be asked to provide a descriptive name – this can be anything you wish.

The driver is licenced via the cloud, but an optional "offline" key can be request under special circumstances. Please FIRST refer to the "LICENCING" section below and then contact support@ultamation.com if you REQUIRE offline activation. The same offline key can be used for multiple driver instances in the same system.



If you do not have a cloud licence and do not enter a valid offline licence key, the system will function for ONE hour and then control will be suspended. The offline licence key can be entered at any time after initial setup without having to reconfigure each tile.

Once added, the switcher will be available within the Source Route configuration within Crestron Home. Simply assign your existing sources to the inputs, and display devices to outputs.

When you select a source for a zone, the module will send the appropriate switching commands to the IP-CS7. Switching can be verified via the IP-CS7 web interface.

ROUTING AUDIO AND VIDEO

The driver has 20 routable inputs, the audio having HDMI and Analogue options for transmitters with those options, if you are using a device that has both audio and video and you want to separate them you will need to use the generic AV Adapter available in Crestron Home.

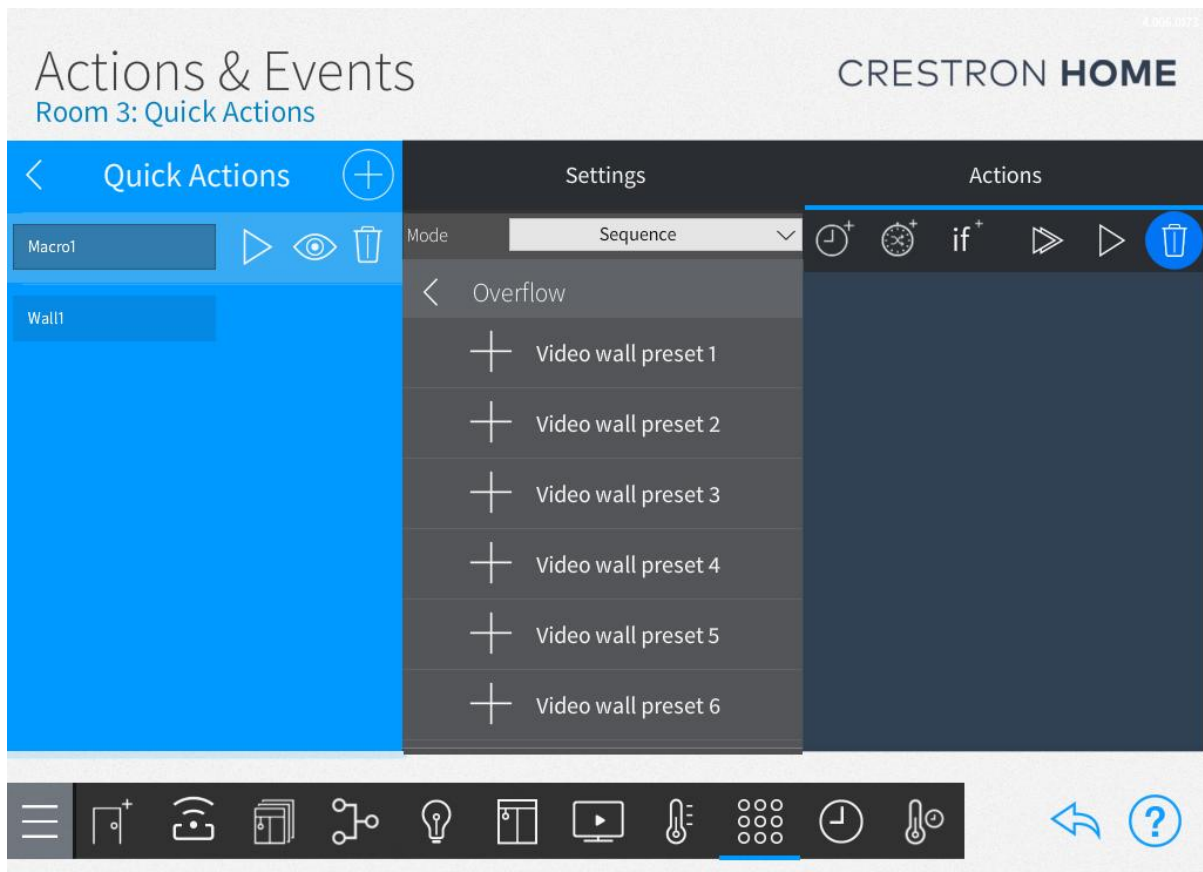
To have different audio playing you should first route your video and then route your audio as routing video will route the video and audio together. Audio routing sends audio on its own.

Note: Please use the description i.e. Analogue Audio Input 1, HDMI Audio Input 1, Video Input 1 rather than the bold numbers on the side for routing.

Inputs		Outputs	
1	Not Assigned Analogue Audio Input 1	Not Assigned	1
2	Not Assigned HDMI Audio Input 1	Not Assigned	1
2	Not Assigned Video Input 1	Not Assigned	2
3	Not Assigned Analogue Audio Input 2	Not Assigned	2
4	Not Assigned HDMI Audio Input 2	Not Assigned	3
4	Not Assigned	Not Assigned	2

CUSTOM COMMANDS

Within the Crestron Home custom commands section there are a few custom commands available to run the video walls and macros defined on the controller. The custom commands can run video walls and macros with ids between 1 and 16 inclusive.



The custom actions can be seen in the above screenshot.

SUPPORT

If you have any issues with an integration solution please let us know by contacting Ultamation support on support@ultamation.com and please include as much detail about your issue as possible, such a recent processor error log.

Licence verification messages are posted to the error log, so please ensure you have checked this.

LICENCING

This integration solution (including software, images and all other associated assets distributed as part of the purchased download package) is licenced on a PER PROCESSOR basis.

A purchase should not be completed without correct information as refunds cannot be issued for errors or changes made to details following purchase.

This is an electronic product and there is no physical delivery.

The integration solution is provided without any warranty with respect to the reliability of the controlled device or changes to device protocol. We will endeavour, through best efforts, to maintain the integration solution's functionality and any bug fixes will be provided free-of-charge. Additional functionality may be released as a variation of this integration solution and this will be a separate, purchasable, product.

CLOUD LICENCE

This integration solution contacts Ultamation's licencing server at startup. If the server finds a matching licence for the integration solution and processor then the integration solution will be licenced. Otherwise, the integration solution will check the offline licence key. If you purchase a licence **after** you have loaded the integration solution, please reboot the system to see changes take effect.

If you purchased a licence **before** it was migrated to the cloud service, i.e. you have a licence key already, you must enter this into the **Offline Key** user attribute. If you purchased the integration solution **after** it was migrated, and you don't have a licence key, no further action is required.

If no licence exists for the product/processor the integration solution will enter a short trial period (ONE HOUR) to allow for verification of correct control or evaluation.

To request an OFFLINE key, please contact support@ultamation.com with your order details and a brief explanation why you REQUIRE offline activation. Ultamation reserve the right to refuse offline activation.

NOTE: Once an offline key has been issued no further licence changes will be granted. Moving the integration solution to a new processor will require an additional licence purchase.