

QMOTION PLATFORM DRIVER FOR CRESTRON HOME




Revision: 4.00

Date: 21 May 2025

MODULE DESCRIPTION

The platform module provides integration with the QMotion hub providing home-owner operation of individual shades and shade groups from the Crestron Home user interface. When available for platform drivers, the system will also support Crestron Home programmable sequences. A single driver is used to populate the entire system with shades and groups which can then be added to individual rooms.

The following controls are provided:

-  Simple commands "Open", "Stop", "Close"
This will command the specified shade or group,
-  Position
Any shade or groups can be set to a specific position using a slider where hard left is fully closed, and hard right is fully open.
-  Feedback
Each shade/group tile will show the current state of the specified element. The system polls each element in turn, so feedback may take a minute to correctly reflect a settled state.

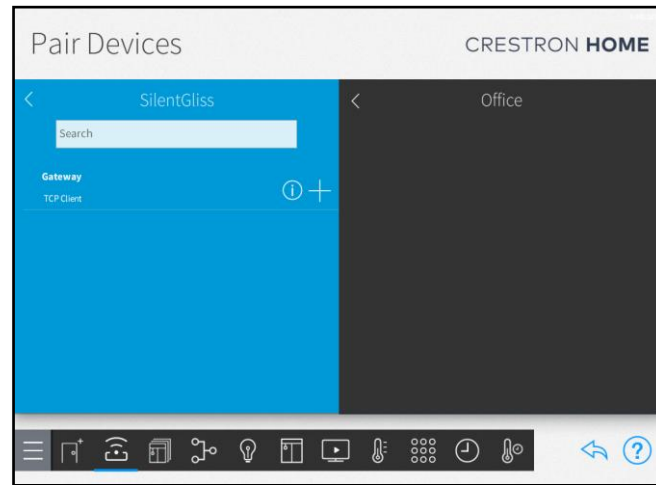
INSTALLATION PREREQUISITE

The QMotion hub must be setup and linked to the users account such that they can generate Integration codes within the app.

Adding the QMotion Platform Device

After importing the driver, the QMotion driver will be found under:

Devices > Platform > QMotion



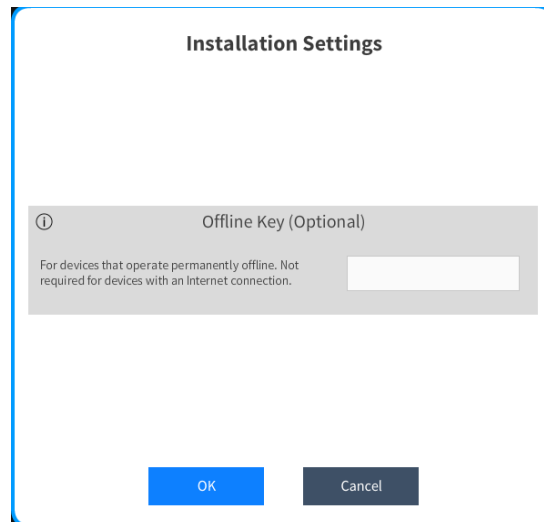
Adding the Tile

Ensure a room is selected, and then click on the '+' against the QMotion Driver. The room can be ANYWHERE in the system and there will not be a visual tile added for the gateway device. To keep things organised you could add this device to a plant or equipment room.

You will be asked to provide a descriptive name for the platform driver – this can be anything you like .

The platform device will be added to your system and you will be asked to enter some more settings.

The driver is licenced via the cloud, but an optional "offline" key can be requested under special circumstances. Please FIRST refer to the "Licensing" section below and then contact support@ultamation.com if you REQUIRE offline activation. The same offline key can be used for multiple driver instances in the same system.

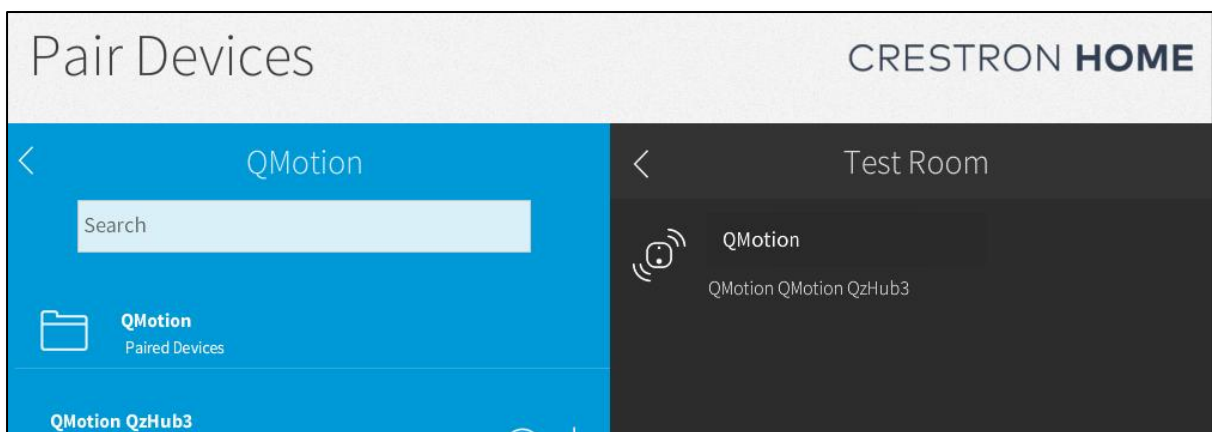


If you do not have a cloud licence and do not enter a valid offline licence key, the system will function for ONE hour and then control will be suspended. The offline licence key can be entered at any time after initial setup without having to reconfigure each tile.

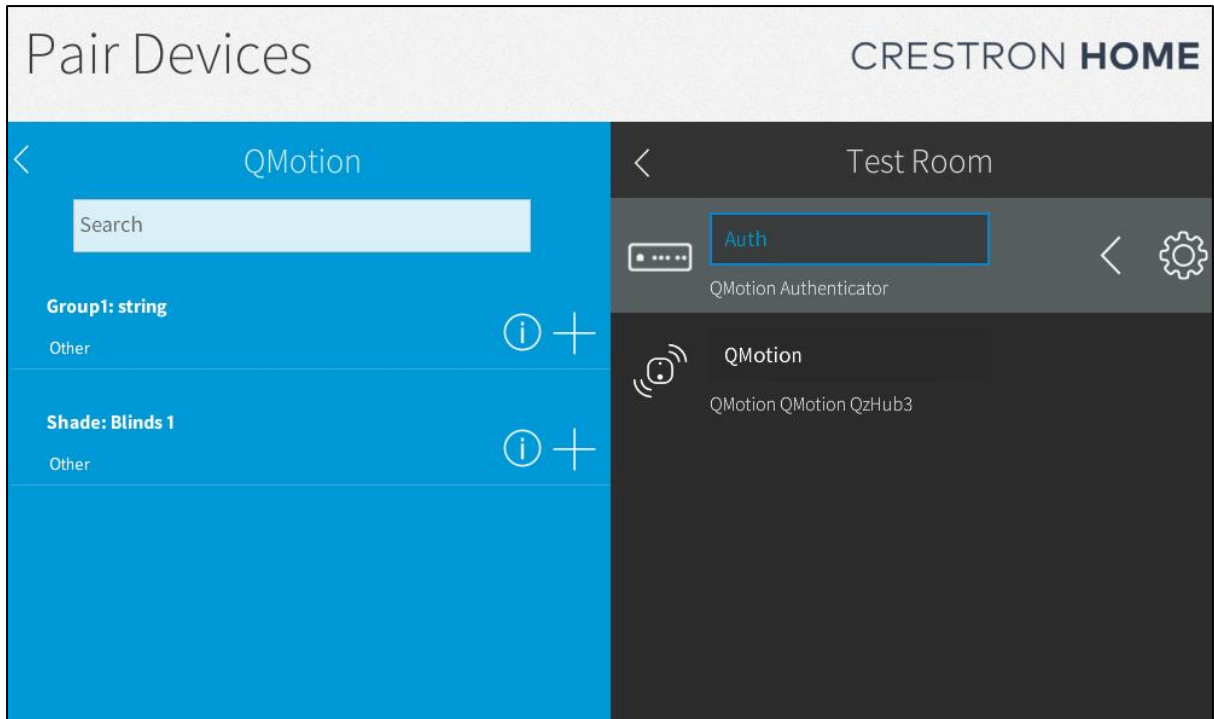
Once the device has been added to the system, an Authentication Tile Called Auth will be accessible in the driver folder to be added. This tile is purely for integrating the QMotion with the driver in Crestron Home.

Within the QMotion app, you can generate a 6-digit code for integration. Input this code into the authentication tile and you should receive a message indicating successful authentication"

These will then be added automatically to the Crestron Home system and appear under a new "Folder" as shown below:



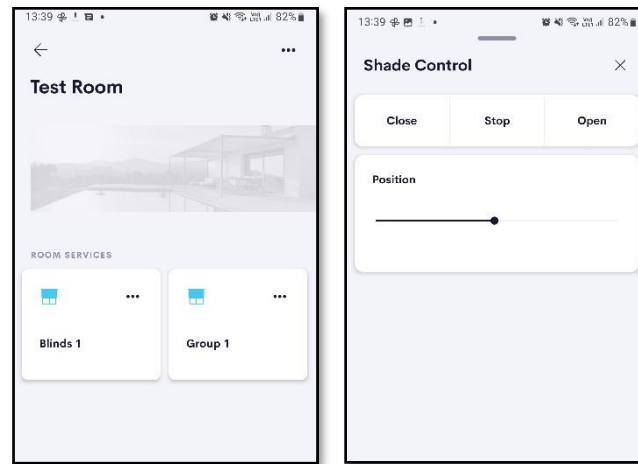
Opening the folder will present you with the auth tile initially and after authentication you will be able to select from an array of devices. Groups and Single Shades.



These devices can then be added to the appropriate room, which can be different from where the device was added. As each device is added, it must be given a name – this is the title that will be displayed on the Crestron Home UI.

The auth tile can be removed after successful authentication.

Each device will appear as a tile in the associated room.



Tapping on the tile will toggle the current shade or group state, while tapping on the “more” dots will open a set of controls for finer grained control.

QUICK ACTIONS & SEQUENCES

Several functions are exposed to sequences via Crestron Home's quick actions.

Shade

- 🌿 Open, Close, Stop
Commands the individual shade to start open, close or stop
- 🌿 Position
Send the individual shade to a specific position

Group

- 🌿 Open, Close, Stop
Commands the shade group to start open, close or stop
- 🌿 Position
Send the shade group to a specific position

SUPPORT

If you have any issues with an integration solution please let us know by contacting Ultamation support on support@ultamation.com and please include as much detail about your issue as possible, such a recent processor error log.

Licence verification messages are posted to the error log, so please ensure you have checked this.

LICENCING

This integration solution (including software, images and all other associated assets distributed as part of the purchased download package) is licenced on a PER PROCESSOR basis.

A purchase should not be completed without correct information as refunds cannot be issued for errors or changes made to details following purchase.

This is an electronic product and there is no physical delivery.

The integration solution is provided without any warranty with respect to the reliability of the controlled device or changes to device protocol. We will endeavour, through best efforts, to maintain the integration solution's functionality and any bug fixes will be provided free-of-charge. Additional functionality may be released as a variation of this integration solution and this will be a separate, purchasable, product.

CLOUD LICENCE

This integration solution contacts Ultamation's licencing server at startup. If the server finds a matching licence for the integration solution and processor then the integration solution will be licenced. Otherwise, the integration solution will check the offline licence key. If you purchase a licence **after** you have loaded the integration solution, please reboot the system to see changes take effect.

If you purchased a licence **before** it was migrated to the cloud service, i.e. you have a licence key already, you must enter this into the **Offline Key** user attribute. If you purchased the integration solution **after** it was migrated, and you don't have a licence key, no further action is required.

If no licence exists for the product/processor the integration solution will enter a short trial period (ONE HOUR) to allow for verification of correct control or evaluation.

To request an OFFLINE key, please contact support@ultamation.com with your order details and a brief explanation why you REQUIRE offline activation. Ultamation reserve the right to refuse offline activation.

NOTE: Once an offline key has been issued no further licence changes will be granted. Moving the integration solution to a new processor will require an additional licence purchase.