

Wildcard Recipe: Lutron triggering Crestron Home Actions

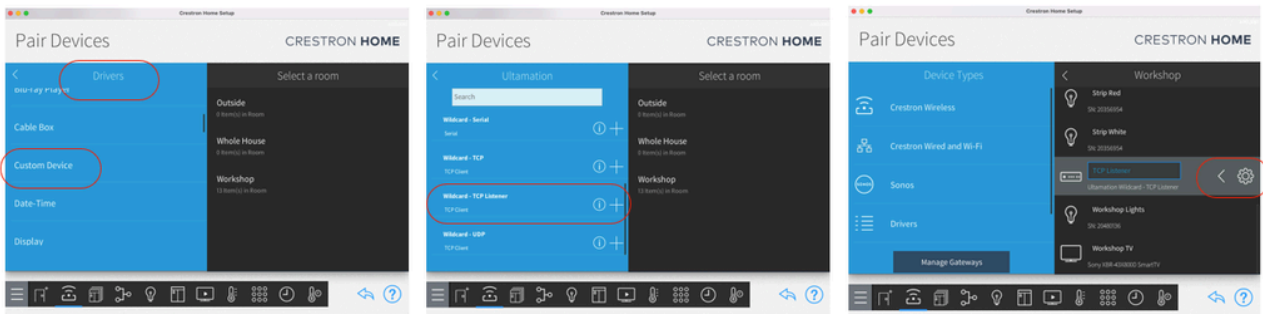
? Problem

You want to be able to control Crestron Home actions from Lutron keypads etc.

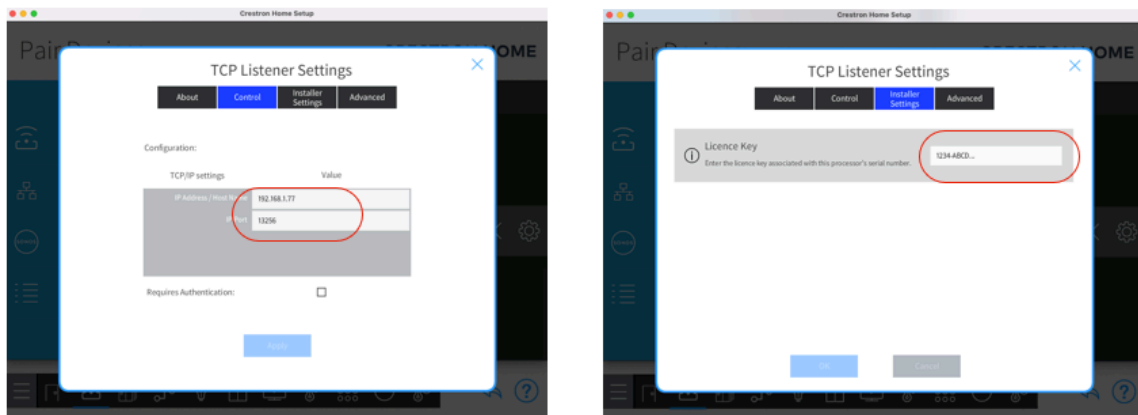
💡 Solution

Driver/Module Setup

First start by adding the driver to any room in Crestron Home (the room is just a place holder for the driver and not required to be seen by end user - suggest placed in a hidden room). You'll find the driver under 'Drivers' - 'Custom Device'



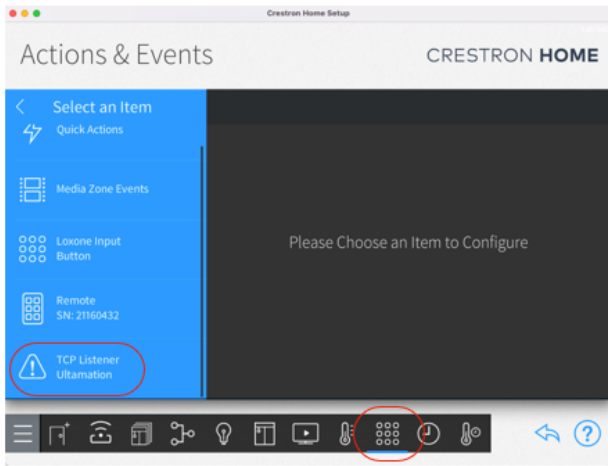
Click on the TCP Listener settings and navigate to 'Control' tab Enter IP address of Lutron processor, Port number can be anything as long as it's free and open.



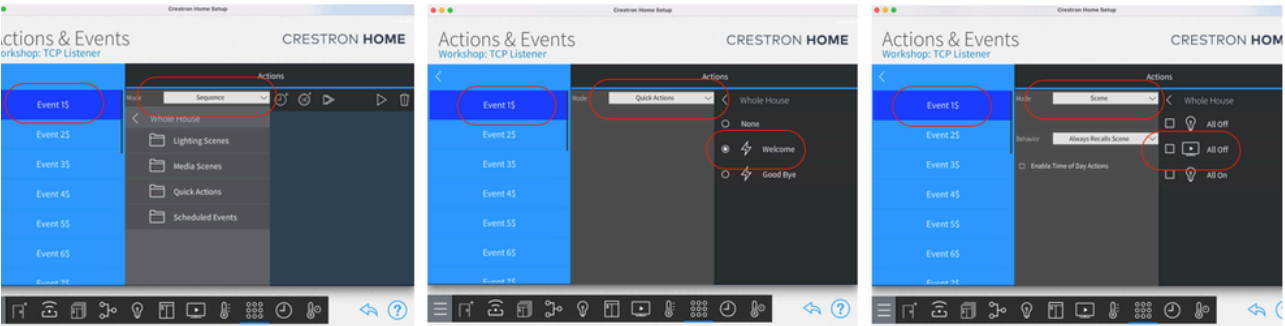
Under 'Installer Settings' tab enter Licence Key (this can be purchased from Ultamation Online Store) <https://www.ultamation.com/TCP-Listener>

Action & Events Setup

Navigate to 'Action & Events' tab and find TCP listener module under previously assigned room.



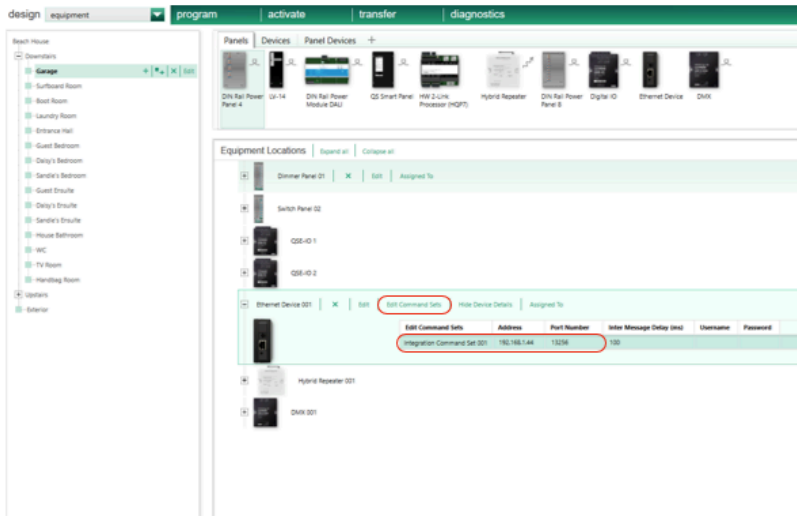
Here you can assign Scenes, Quick Actions, Media Functions or Sequences to a TCP listener Event (in this case a Lutron Button Press)



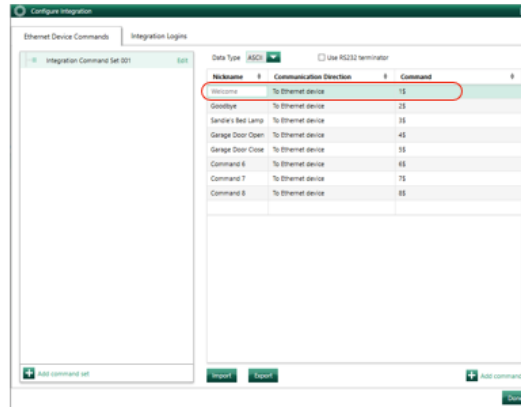
Lutron Setup

Now in Lutron Designer add an 'Ethernet Device' under equipment.

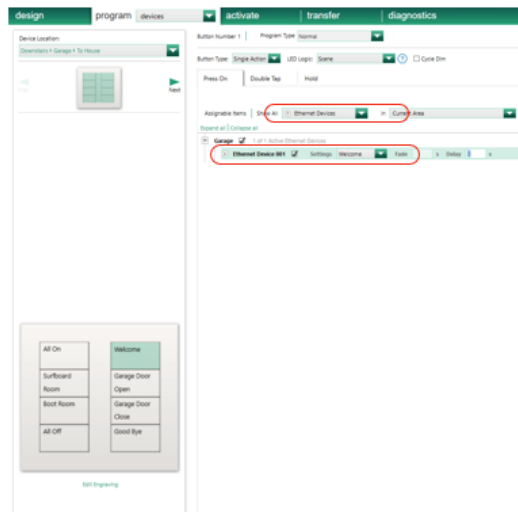
Enter IP address of Crestron Home processor and the same port number used in TCP listener module in Crestron Home settings.



Click 'Edit Command Sets' and Configure your Command Set - inputting 1\$, 2\$, 3\$ etc into the Command column. (These commands are what the Crestron Home TCP Listener module is listening for) .



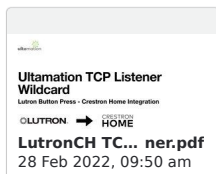
Assign the Ethernet Device and Command to your chosen Lutron button and carry out a transfer to Lutron processor.



Lutron button press should now be controlling actions in Crestron Home

👍Kudos

A HUGE thank you to Jonathan Hervé of [Qube Integration](#) of Jersey for thinking up this integration, working out how to do it and then writing up such a superb “How To” with full details including images, see below for a pdf version.



I believe one of the things Jonathan has used this for is to trigger Philips Hue scenes from Lutron keypads, through our Crestron Home Philips Hue integration.