

ULTAMATION UC-DMX-2xx DRIVER FOR CRESTRON HOME

Revision: 3.00

Date: 18 March 2024

CRESTRON HOME ONLY

This document describes the configuration of the UC-DMX-2xx Platform for Crestron Home only and requires at least one physical UC-DMX-2xx device connected to suitable DMX light fittings.

For control of the UC-DMX-2xx using the SIMPL programming environment, please refer to the specific SIMPL modules and associated documentation.

MODULE DESCRIPTION

With Crestron Home OS4, 3rd party lighting can now be integrated into your systems as native lighting loads. We have developed a brand-new driver to complement the updated firmware of the UC-DMX-210 which brings this new functionality to the UC-DMX-2xx DMX controllers.

The platform driver reads a DMX lighting configuration which is created using the UC-DMX Configuration tool (available as a free download on the Ultamation shop site, from the DMX product page).

This file is monitored by the driver and if any changes are made, will automatically pick up the new configuration and create lighting loads within Crestron Home.

These loads can then be added to rooms as desired in the normal way and, once added, become part of the lighting fabric of the home, responding to scene commands and circadian cycles.

We currently support the following lighting load types:

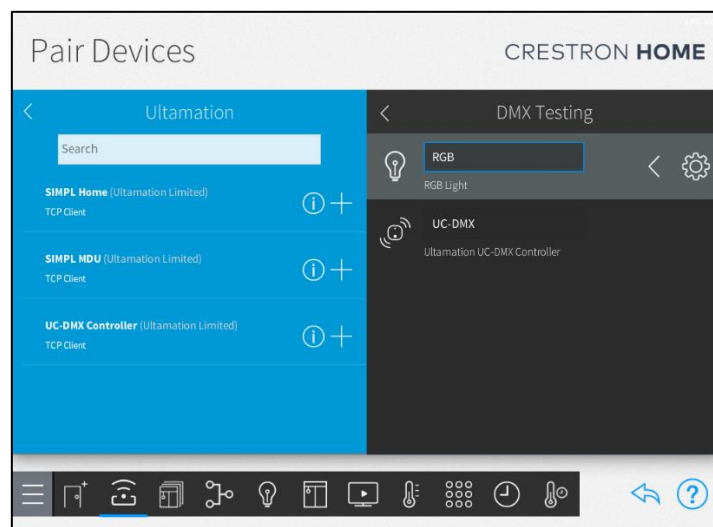
Type	Description
Dimmable	A simple, single DMX channel fixture.
Tuneable	A two DMX channel fixture with Warm and Cool white LEDs – this allows blending of the channels to mix any colour temperature between the two.
RGB	A three DMX channel fixture with Red, Green and Blue channels – common for colour changing tape installations.
RGBW	A four DMX channel fixture with Red, Green, Blue and White channels which can provide superior unsaturated tones by balancing the natural white channel against the RGB colour components.
RGB Tuneable	A five DMX channel fixture with Red, Green, Blue and Warm and Cool White. This is essentially a combination of an RGB and Tuneable fixture providing the ultimate in colour tone configuration.

Each fixture is configured using the tool, so DMX addressing, colour temp and ramp levels are all defined in the configuration file which is then loaded to the Crestron processor from the tool.

Adding a UC-DMX Controller Platform

The UC-DMX Controller Platform driver will be found under:

Devices > Platform > Ultamation



Adding the Tile

Ensure a room is selected, and then click on the '+' against the UC-DMX Controller. The room for the platform driver will generally be a plant/equipment room as this isn't an element that the home owner will ever see.

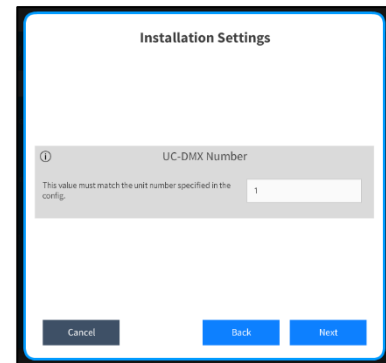
You will be asked to provide a descriptive name for the tile – this can be anything you like. You will then need to enter the TCP address of a UC-DMX-2xx. This should be a fixed address. (Multiple UC-DMX-2xxs are supported on different addresses.)

The IP Port should normally be left at the default value unless you have configured your UC-DMX-2xx specifically to use a different control port.

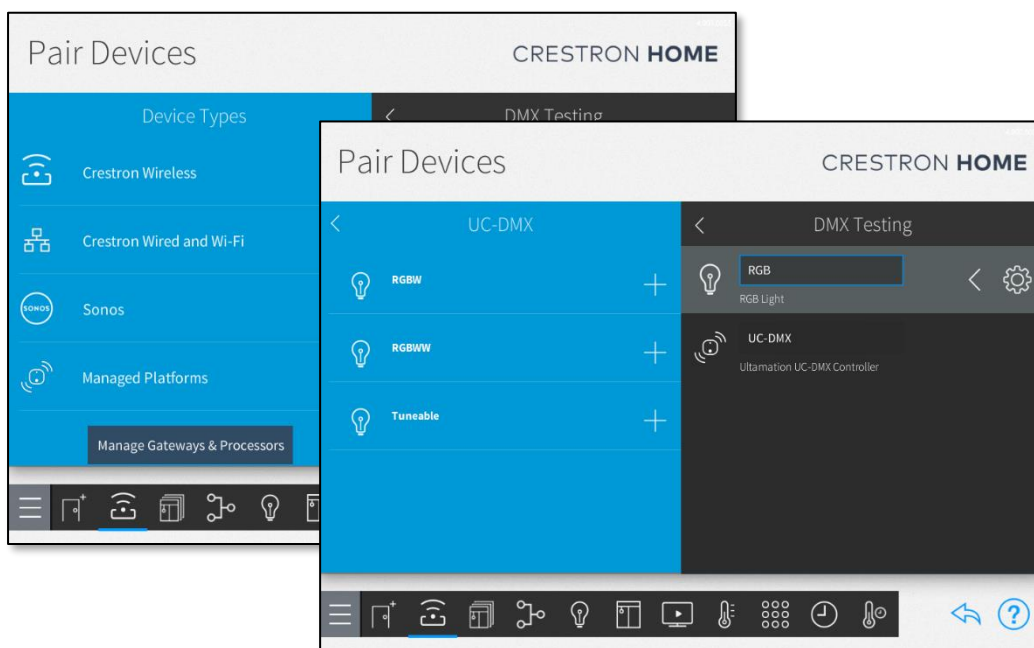
Finally, you will need to specify the "Unit Number". This **MUST** match the unit number defined for the configuration file. If you only have a single UC-DMX, then this will almost certainly be the default of '1'.

The unit number determines which configuration file is applied to which driver instance.

The platform driver will be added to your system and – assuming you have the correct configuration file loaded, you will now also have a collection of lighting fixtures available to place into rooms.



Return to the top level of the devices tree and you will find a folder called "Managed Platforms". Enter this folder, and you will find another folder bearing the same name as the platform device you just installed.



This folder will contain each of the light fixtures defined in the configuration file. Now add them to their appropriate rooms with Crestron Home.

Your lights will now be part of the Crestron Home system and can be configured just as easily as native Crestron lighting.

SUPPORT

If you have any issues with a driver or installation please let us know by contacting Ultamation support on support@ultamation.com and please include as much detail about your issue as possible, such a recent processor error log.

LICENCE

This module (including software, images and any, and all other associated assets distributed as part of the download package) is copyright Ultamation Ltd but is provided free of charge for use with the UC-DMX-200 hardware device. It is ONLY compatible with the Ultamation UC-DMX-2xx Ethernet DMX controller.

The module is provided without any warranty with respect to the reliability of the controlled device or changes to device protocol. We will endeavour, through best efforts, to maintain the module's functionality and any bug fixes will be provided free-of-charge. Additional functionality may be released as a variation of this module.