

SKY+HD IP CRESTRON CERTIFIED DRIVER

Revision: 1.00

Date: 15 July 2019

SUMMARY

Ultamation's SKY+HD IP Crestron Certified Driver (CCD) replicates the Sky+HD remote controls over IP and is specifically designed to be used with applications that support the Crestron Certified Driver framework, such as Pyng (OS2), Crestron Home (OS3), AV Framework, Studio and even SIMPL Windows with the appropriate CCD wrapper module.

This Datasheet provides the essential information for integration between Sky+HD boxes and a Crestron control processor running Pyng.

This module is compatible with 3-Series Crestron systems ONLY and has been tested with current UK Sky+HD under the Pyng (OS2) and Crestron Home (OS3) environments.

The module itself is supplied as a CCD package (pkg) file which can be imported into any compatible system. Details on importing the module into Pyng are provided in this document.

We recommend testing the module prior to purchase by downloading the module and using the 1 hour trial period.



INSTALLATION NOTES

The Crestron system communicates with the Sky box directly via an IP connection. The Sky boxes must be set to a static IP address and we would recommend a physical connection between the Sky boxes and the network.

The licence key is tied to the processor serial number and can be used for multiple instances of the module on the same processor. Therefore if you have three sky boxes in the same project, you only require one licence.

IMPORT THE MODULE INTO PYNG/CRESTRON HOME

Before the module can be used to control your Sky box, it must be imported into your Pyng environment. For 3rd party drivers, this process differs from the normal "drivers.crestron.io process", and instead uses a method called "side loading".

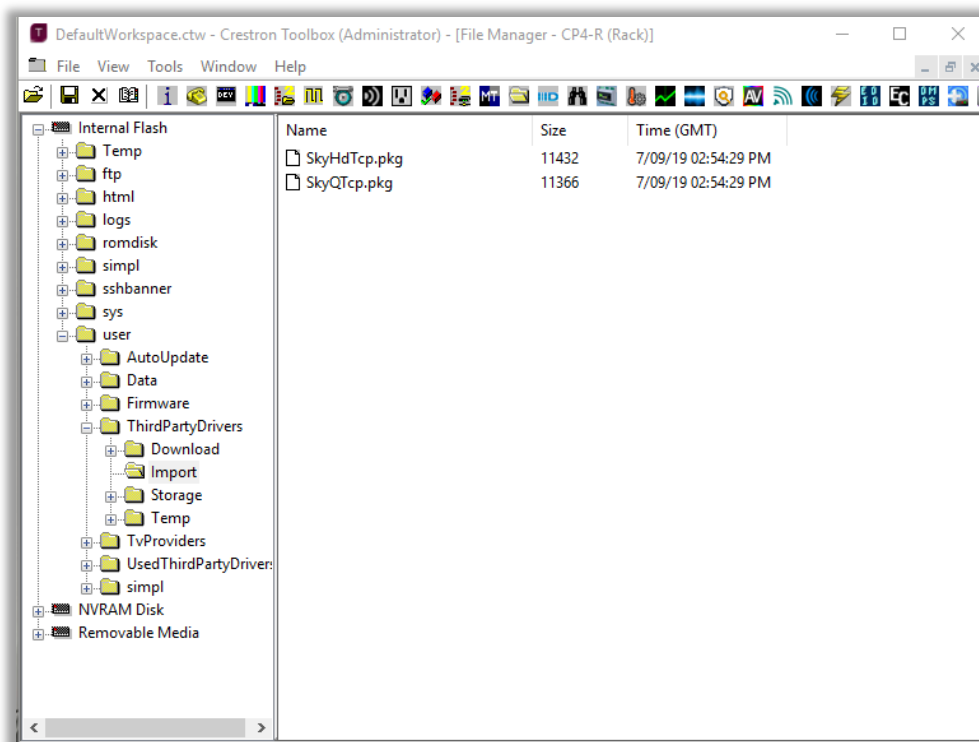
Side-Load the Driver

You will need to copy the driver package file to your Pyng processor. You can use any tool capable of FTP (OS2 only) or secure copy (Crestron Home enforces security, so unsecure FTP is no longer available).

Crestron Toolbox will work fine. The image below shows the location where any side loaded drivers must be copied to. That is:

Internal Flash\user\ThirdPartyDrivers\Import

In this example we show BOTH the Sky Q and Sky HD drivers though you will only need the driver for your particular installation (the drivers are supplied separately).

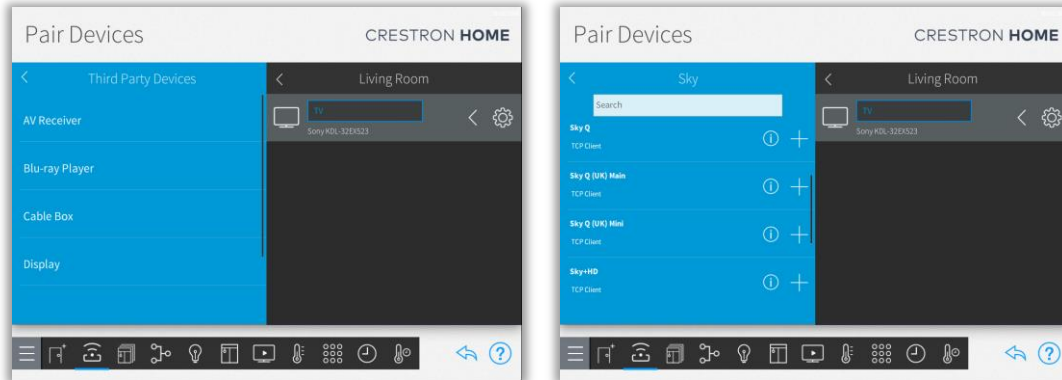


Other tools, such as Filezilla can also be use, though you will need to connect using SFTP for Crestron Home (OS3) systems.

Once the files are copied, the Pyng system will automatically import the drivers and rebuild the driver list in the Pyng configuration system. This may take a few minutes, and once imported, the drivers will disappear from the "Import" directory.

CONFIGURING THE DRIVER IN PYNG/CRESTRON HOME

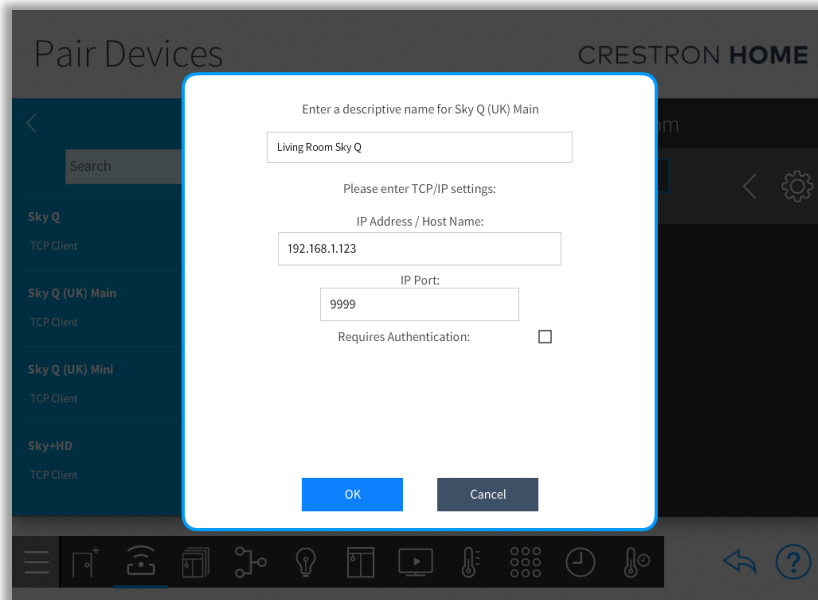
Add a 3rd Party Cable Box as you would normally within Pyng. Select "SKY" as the provider and you will see a number of Sky models listed (image on the right). If they are not present, please check you have imported the driver(s) correctly, or allow 10 minutes for the system to complete the import.



The drivers support various models of Sky box, so please choose the appropriate model for your installation.

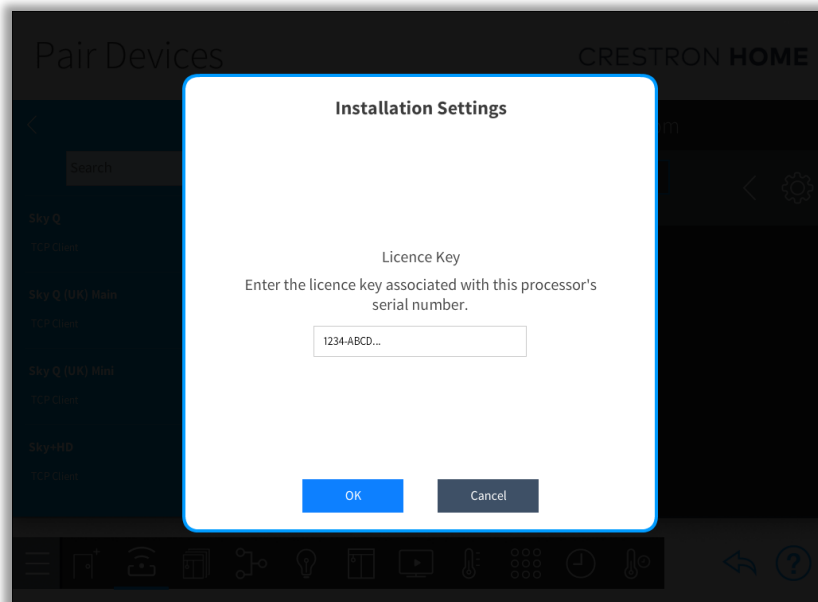
- 🌱 In the case of Sky Q, ANY of the Sky Q TCP Client drivers will work as the same driver is used for all 3 models.

This example shows the Sky Q driver setup, but it is identical to the Sky+HD driver setup. The CCD drivers are NOT the same however and present different control options to reflect the differences in the Sky remote controls.



Add the module and you will be asked to provide a name (this can be anything) and the device's IP address. This MUST match the static IP address you have assigned to the Sky box. The Port will be set to "9999". Ignore this – it is not used. Requires Authentication should also be left unchecked. Press OK.

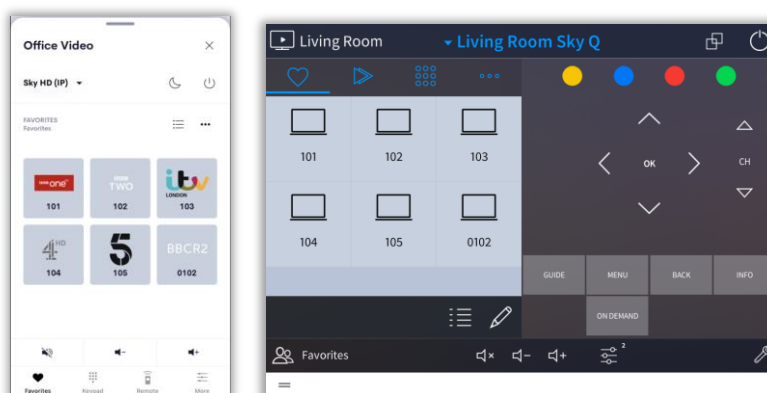
Next, you will be prompted to enter the licence key that you will have received when you purchased the module. This is tied to your SPECIFIC processor serial number (which can be obtained through Toolbox/System Info). If you are configuring using the XPanel, we recommend cutting and pasting the licence key to avoid typos.



If you wish to evaluate the module, you can ignore the licence key entry step and you will be able to use the module for 1 hour after each reboot. However, when you purchase a licence, you will need to remove and re-add the Sky box configuration (NOT THE DRIVER) in order to enter the new licence key.

Finally, configure your local TV provider so that you can make use of the channel preset/favourites features of Pyng/Crestron Home.

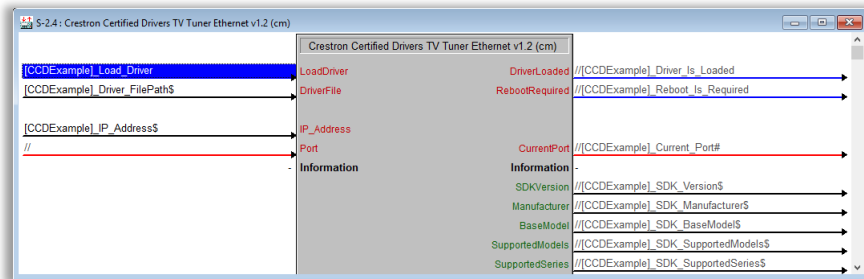
You will need to complete your configuration by assigning the inputs/outputs of the Sky box for your Pyng/Crestron Home system, and you will now have Crestron control of your Sky box.



USING THE MODULE WITH SIMPL CCD WRAPPERS

The SIMPL Windows CCD wrappers can also be used to load the Sky driver.

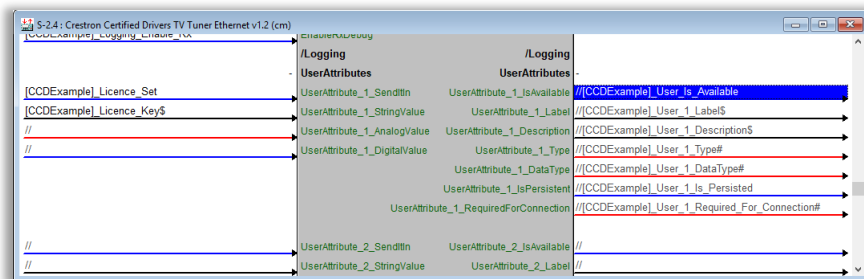
Please follow the instructions provided with the Crestron CCD "TV Tuner Ethernet" module which is part of the Crestron standard database.



You may need to extract the .DLL file from the .PKG download file in order for the SIMPL wrappers to load the driver. The .PKG can be renamed to .ZIP and unzipped using any standard zip tool (such as the native windows zip support).

Copy the .DLL file to your processor and ensure that the file paths are correct so that the CCD Wrapper module can load the driver. We recommend you follow Crestron's best practice for driver locations which are described in the CCD documentation.

You must provide the licence key to the module in SIMPL. This is accomplished by passing the key string value into User Attribute 1 on the CCD wrapper module.



SUPPORT

If you have any issues with the driver or installation that are not addressed in this datasheet, please let us know by contacting Ultamation support on support@ultamation.com and please include as much detail about your issue as possible, such a recent processor error log.

Licence verification messages are posted to the error log, so please ensure you have checked this.

LICENCE

This module (including software, images and any and all other associated assets distributed as part of the purchased download package) is licenced on a PER PROCESSOR basis.

A licence key is generated at the point of purchase and is linked at that time to specific information that MUST be provided at the time of purchase. A purchase should not be completed without correct information as refunds cannot be issued for errors or changes made to details following purchase.

The licence key for each device will be delivered via email along with links to download the module. There is no physical delivery.

The module is provided without any warranty with respect to Sky's IP Control. We will endeavour, through best efforts, to maintain the module's functionality and any bug fixes will be provided free-of-charge. Additional functionality may be released as a variation of this module and this will be a separate, purchasable, product.