

PARADOX ALARM PANEL DRIVER FOR CRESTRON HOME

Revision: 2.02

Date: 13 May 2026

CRESTRON HOME ONLY

This document describes the configuration of the Paradox Driver for Crestron Home only.

INSTALLATION NOTES

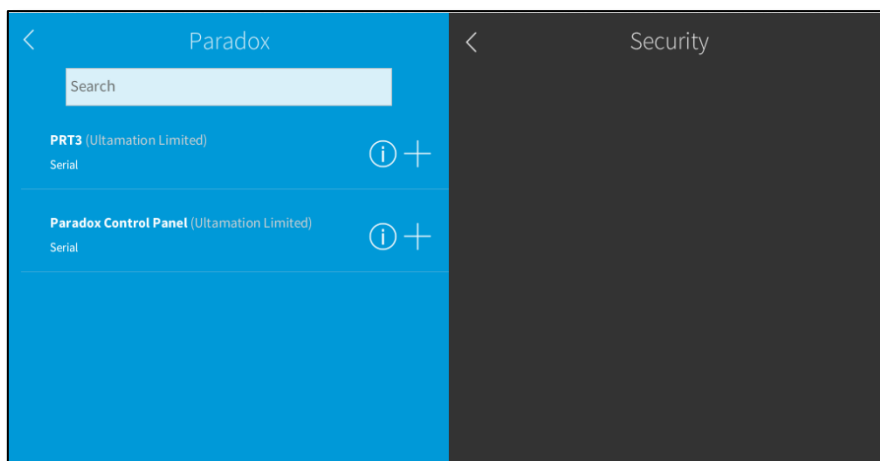
The Crestron system is connected to the Paradox alarm panel over an RS232 connection. This must be installed onto one of the comm ports of the PRT3 printer module connected to the alarm panel. The panel must be set to the correct communication settings to work with the driver (19600 baud rate, 8 data bits, no hardware handshake, no parity, and 1 stop bit). The correct passcode for the alarm panel must also be entered within Crestron Home when installing the driver.

Please check the PRT3 reference and installation manual for further information on how to connect it to your Crestron Home processor.

ADDING THE PARADOX DRIVER

After importing the driver, the Paradox driver will be found under:

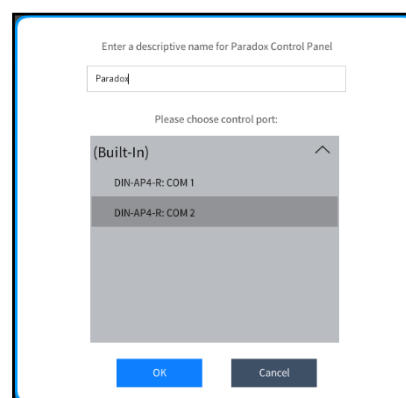
Devices > Drivers > Security Systems > Paradox



Ensure a room is selected, and then click on the '+' against the Paradox Control Panel.

You will be asked to provide a descriptive name for the driver (this can be anything you like) and then to select one of the available COM Port.

After these options have been input, you will be required to enter a valid user code with suitable permissions to arm, disarm and reset the panel. The optional offline key can also be entered at this point, if you do not have a cloud licence and do not enter a valid offline licence key, the system will function for ONE hour and then control will be suspended.



You will also be asked for a comma-separated list of area indices. This must contain only digits between 1 and 8, separated by commas. For example, if your system has area 1, 2, and 4 on it, you must enter '1,2,4' without the quote marks.

You will also be asked for a comma-separated list of zone indices. This must contain only digits between 1 and 192, separated by commas. For example, if your system has zone 1, 2, and 4 on it, you must enter '1,2,4' without the quote marks. If you do not wish to have any zones, leave this field empty.

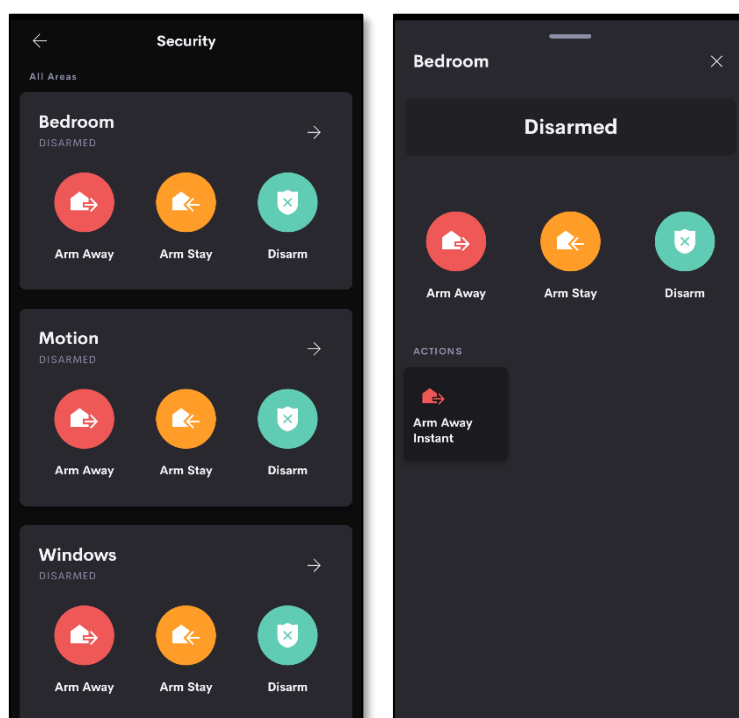
NOTE: The Paradox API does not tell us which areas a zone belongs to. Due to this limitation, all zones appear as part of Area 1.

MODULE DESCRIPTION

The driver provides integration with the Paradox Panel providing home-owner operation of the alarm settings for each distinct area. The areas should be automatically setup and integrated when the device is connected to Crestron Home and the driver is installed correctly. An example is shown below featuring two areas, Ground and First floor. Ground floor has two zones within it. The controls shown are described below.

The following controls are provided within Crestron Homes Security Tab:

- 🌿 Arm Away - This will tell the Paradox Panel to fully arm the area.
- 🌿 Arm Stay - Similarly this will tell the Paradox Panel to partly arm the area.
- 🌿 Disarm - This will tell the Paradox Panel to disarm the area.
- 🌿 Arm Away Instant - This will tell the Paradox panel to fully instant arm the area.



SUPPORT

If you have any issues with an integration solution please let us know by contacting Ultamation support on support@ultamation.com and please include as much detail about your issue as possible, such a recent processor error log.

Licence verification messages are posted to the error log, so please ensure you have checked this.

LICENCING

This integration solution (including software, images and all other associated assets distributed as part of the purchased download package) is licenced on a PER PROCESSOR basis.

A purchase should not be completed without correct information as refunds cannot be issued for errors or changes made to details following purchase.

This is an electronic product and there is no physical delivery.

The integration solution is provided without any warranty with respect to the reliability of the controlled device or changes to device protocol. We will endeavour, through best efforts, to maintain the integration solution's functionality and any bug fixes will be provided free-of-charge. Additional functionality may be released as a variation of this integration solution and this will be a separate, purchasable, product.

CLOUD LICENCE

This integration solution contacts Ultamation's licencing server at startup. If the server finds a matching licence for the integration solution and processor then the integration solution will be licenced. Otherwise, the integration solution will check the offline licence key. If you purchase a licence **after** you have loaded the integration solution, please reboot the system to see changes take effect.

If you purchased a licence **before** it was migrated to the cloud service, i.e. you have a licence key already, you must enter this into the **Offline Key** user attribute. If you purchased the integration solution **after** it was migrated, and you don't have a licence key, no further action is required.

If no licence exists for the product/processor the integration solution will enter a short trial period (ONE HOUR) to allow for verification of correct control or evaluation.

To request an OFFLINE key, please contact support@ultamation.com with your order details and a brief explanation why you REQUIRE offline activation. Ultamation reserve the right to refuse offline activation.

NOTE: Once an offline key has been issued no further licence changes will be granted. Moving the integration solution to a new processor will require an additional licence purchase.