






JVC DLP PROJECTOR DRIVER

Revision: 2.01

Date: 12 March 2026

MODULE DESCRIPTION

The JV DLP module supports the following functionality:

-  IP connection (static address required)
-  Discrete Power Control
-  Power Feedback
-  Discrete Input Selection
-  Aspect Ratio Commands

Even though the unit may support additional functionality, this may not be exposed within Crestron Home. Manufacturers should contact Ultamation on support@ultamation.com if they wish additional feature support.

INSTALLATION SETTINGS

Within the projector LAN Control Settings, please ensure that "Standby LAN Control" is turned to On. If this setting is greyed out (this should apply to projectors bought within the EU area), you will need to follow the instructions, within the following link, to enable the change to the LAN Control Setting.

<https://support.habitech.co.uk/hc/en-us/articles/14718593410461-NZ30-Lan-control>

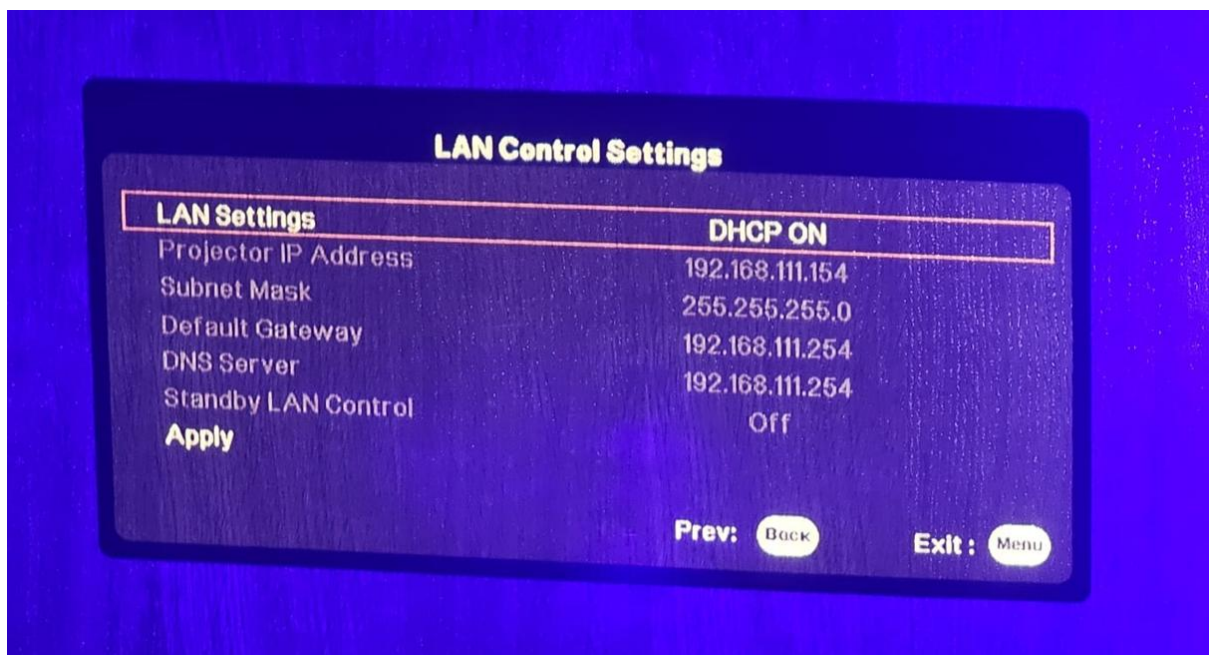
IMPORTANT NOTE CONCERNING NZ30 MODELS

The Standby LAN Control option might be greyed out and set to "Off" due to EU regulations regarding non-secure TCP/IP control. This can make it impossible for systems like Crestron Home to send power commands when the projector is off, rendering the driver ineffective.

To enable Standby LAN controls, the projector requires a LAN password to be set via TCP/IP or RS232 commands.

To resolve the issue:

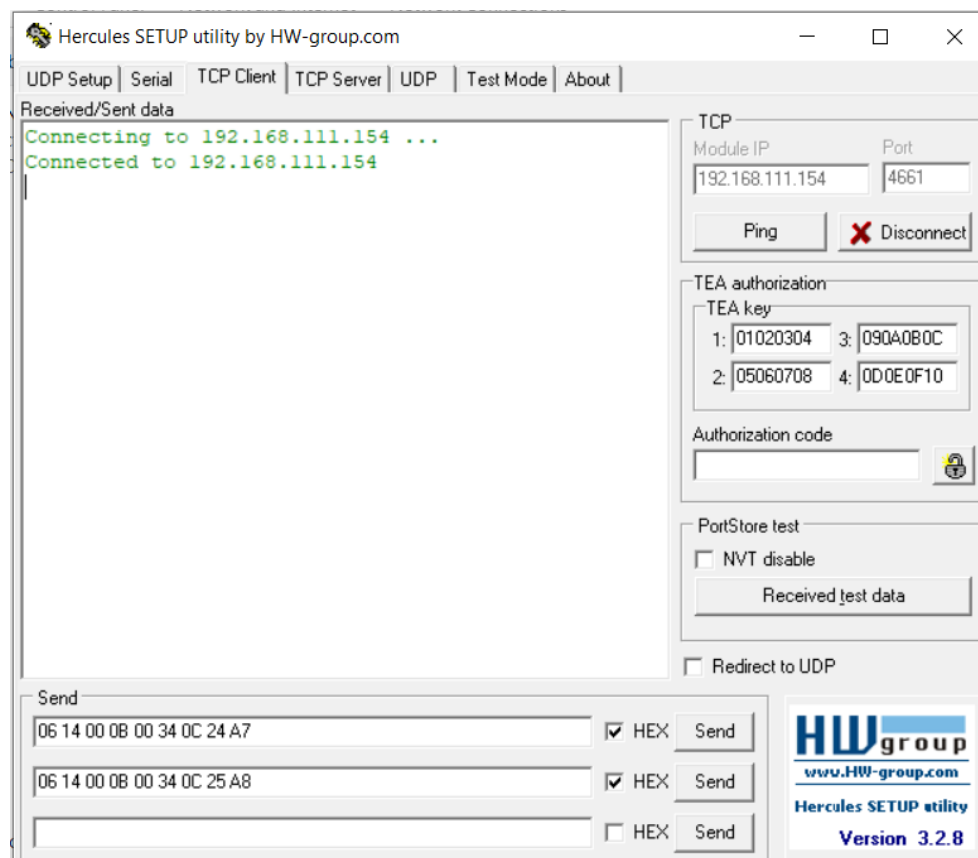
1. Download [Hercules](#).
2. On the projector, navigate to LAN Control Settings. Note the IP Address.



1 Image courtesy Dan Richer from Habitech

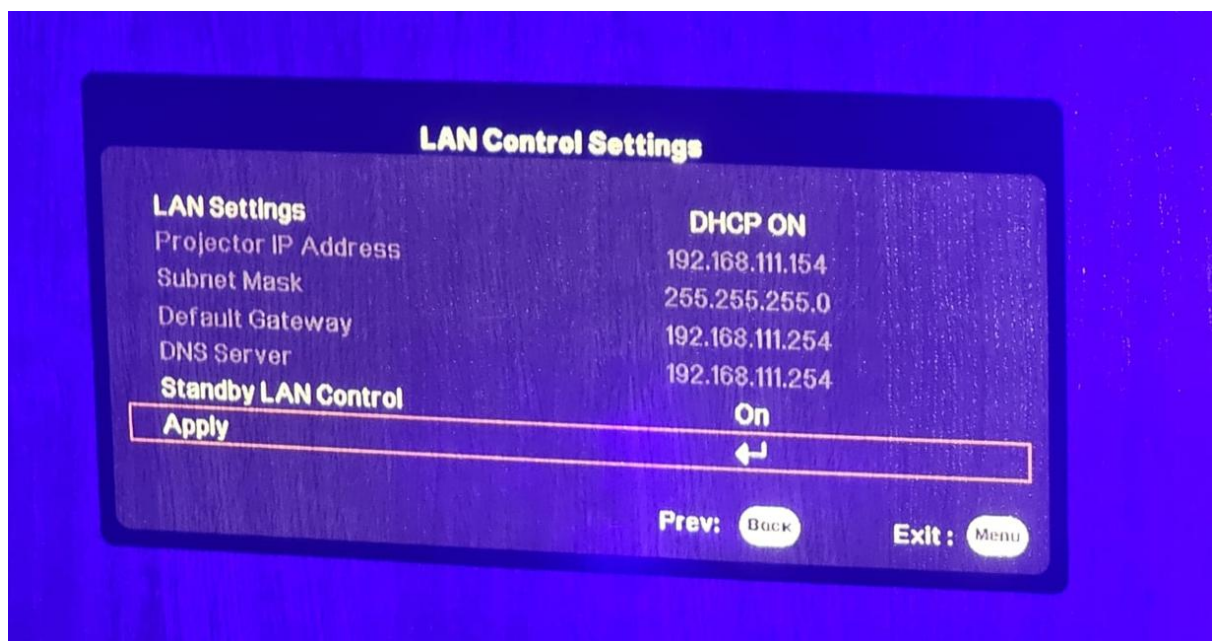
3. Open Hercules and go to the TCP Client tab, enter the IP Address from the projector settings and set the port to 4661.
4. Enable the Hex checkbox to send hex commands.
5. Send Lan Password commands.
 - a. Enter the following two hex commands sequentially into Hercules:
 Command 1: **06 14 00 0B 00 34 0C 24 A7**
 Command 2: **06 14 00 0B 00 34 0C 25 A8**

- b. Send each command one at a time. You will not receive feedback in Hercules other than confirmation the command was sent.



2 Image courtesy Dan Ritcher from Habitech

6. Return to the projector menu and recheck LAN Control Settings. The Standby LAN Control option should now be selectable. Turn it On, then press Apply.



3 Image courtesy Dan Ritcher from Habitech

7. After applying the change, you should see a success message. The projector is now ready to accept power commands even when in standby.

SETUP FOR CRESTRON HOME

Important: The driver's filename should be Ultamation.Ccd.JvcDlpProjectorTcp.pkg

Please rename it if it is different.

Newer models of this projector require a network password to be set up for 3rd party integrations to work, which include these drivers.

1. The driver can be found under Drivers / Display / JVC.
2. To add the driver to your Crestron Home system, follow these steps:
 - a. Room Selection: Ensure that a room is selected in your Crestron Home system. Click the + symbol next to the relevant driver.
 - b. Provide a descriptive name for the driver.
 - c. Enter your IP Address.
 - d. Enter your IP Port (the default is 4661).
 - e. Do **not** click Requires Authentication.

Crestron Home Setup

Help

Pair Devices

CRESTRON HOME

Enter a descriptive name for LX-UH1

JVC DLP Driver Test Name

Please enter TCP/IP settings:

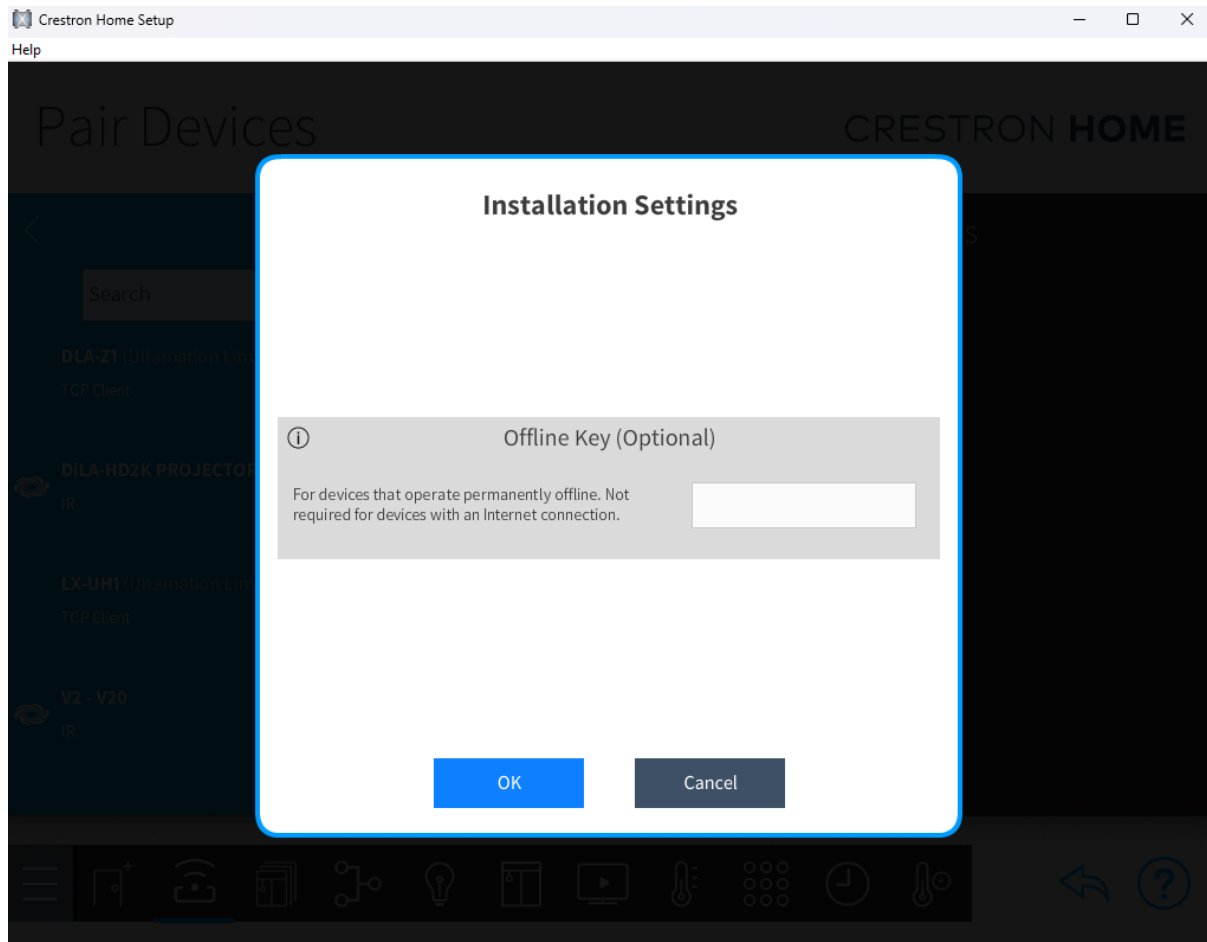
TCP/IP settings	Value
IP Address	1.2.3.4
IP Port	4661

Requires Authentication: ☐

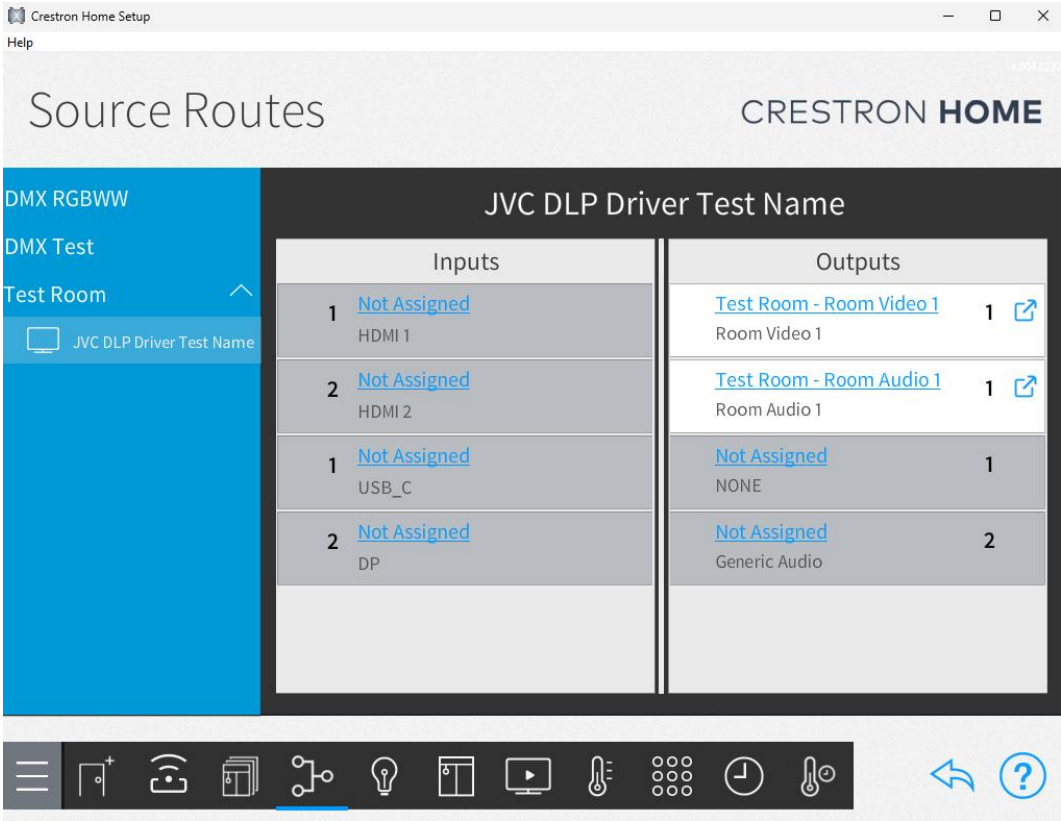
OK Cancel

3. On the next screen (Installation Settings):
 - a. **Offline Key** - This is an optional "offline" key which can be requested under special circumstances. Please FIRST refer to the "Licencing" section below

and then contact support@ultamation.com if you REQUIRE offline activation. If you do not have a cloud licence and do not enter a valid offline key, the system will function for 1 hour and then control will be suspended.

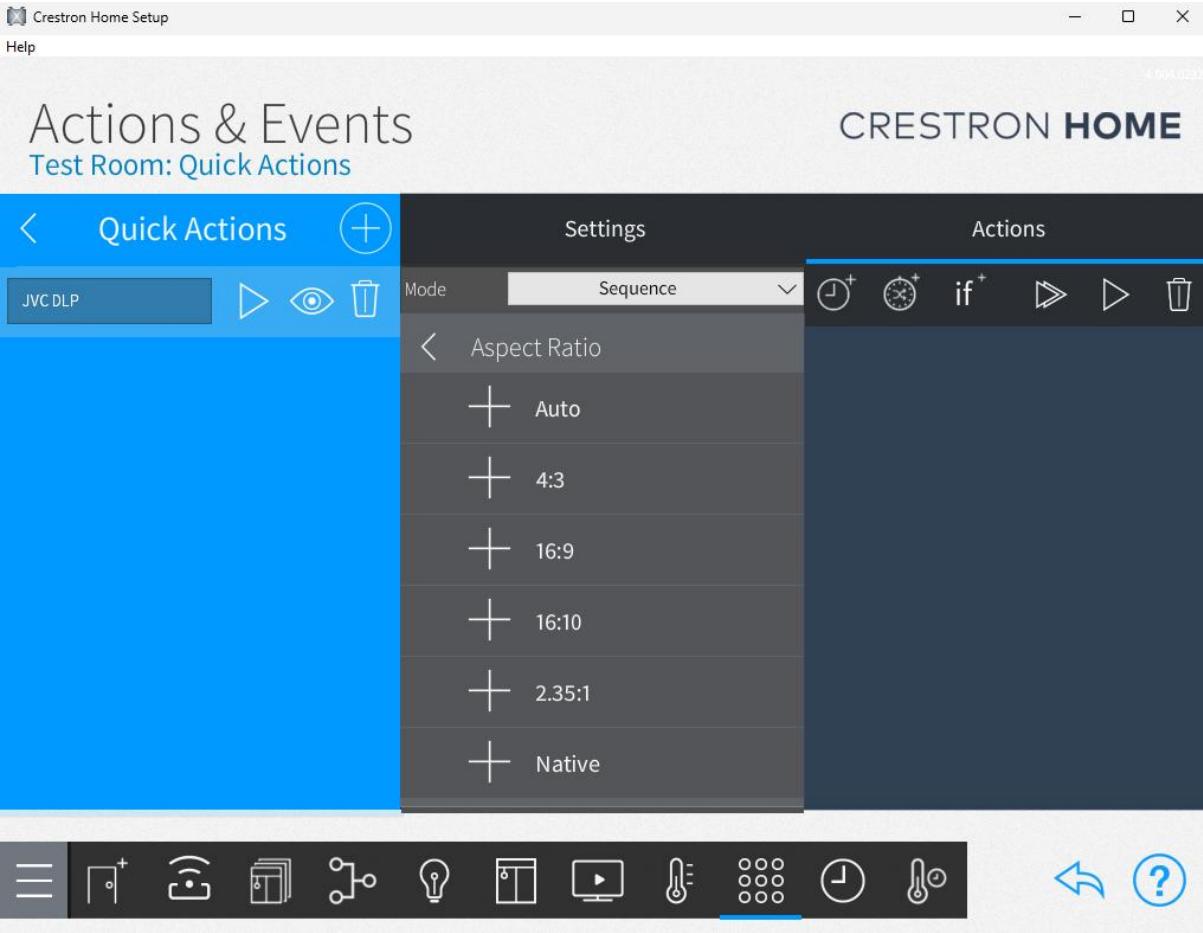


4. You can now configure the Source Routes for the projector as appropriate.



ASPECT RATIO CONFIGURATION

You can configure the available aspect ratios under Actions & Events. For example, you can Select your room -> Select Quick Actions -> Add a new Quick Action -> Set the mode as Sequence -> Select the Room -> Select DLP Driver -> Select Aspect Ratio and add the appropriate one.



SUPPORT

If you have any issues with a driver or installation, please let us know by contacting Ultamation support on support@ultamation.com and please include as much detail about your issue as possible, such a recent processor error log.

Licence verification messages are posted to the error log, so please ensure you have checked this.

LICENCING

This driver (including software, images and all other associated assets distributed as part of the purchased download package) is licenced on a PER PROCESSOR basis.

A purchase should not be completed without correct information as refunds cannot be issued for errors or changes made to details following purchase.

This is an electronic product and there is no physical delivery.

The driver is provided without any warranty with respect to the reliability of the controlled device or changes to device protocol. We will endeavour, through best efforts, to maintain the driver's functionality and any bug fixes will be provided free-of-charge. Additional functionality may be released as a variation of this driver and this will be a separate, purchasable, product.

CLOUD LICENCE

This driver contacts Ultamation's licencing server at startup. If the server finds a matching licence for the driver and processor then the driver will be licenced. Otherwise, the driver will check the offline licence key. If you purchase a licence AFTER you have loaded the driver, please reboot the system to see changes take effect.

If you purchased a licence **before** it was migrated to the cloud service, i.e. you have a licence key already, you must enter this into the **Offline Key** user attribute. If you purchased the driver **after** it was migrated, and you don't have a licence key, no further action is required.

If no licence exists for the product/processor the driver will enter a short trial period (ONE HOUR) to allow for verification of correct control or evaluation.

To request an OFFLINE key, please contact support@ultamation.com with your order details and a brief explanation why you REQUIRE offline activation. Ultamation reserve the right to refuse offline activation.