

JVC D-ILA PROJECTOR DRIVER

Revision: 2.01

Date: 12 March 2026

This documentation contains information on the JVC D-ILA Projector Driver Setup for Crestron Home as well as the SIMPL Wrapper Example (which contains information on the projector's Display Modes). If you wish to skip to information on the SIMPL Wrapper Example, please proceed to **Page 4**.

MODULE DESCRIPTION

The JV D-ILA module supports the following functionality:

- ✿ IP connection (static address required)
- ✿ Discrete Power Control
- ✿ Power Feedback
- ✿ Discrete Input Selection
- ✿ Input Feedback
- ✿ Changes in Aspect Ratios
- ✿ Arrow Key Control
- ✿ Menu, Info and Guide buttons

Even though the unit may support additional functionality, this may not be exposed within Crestron Home. Manufacturers should contact Ultamation on support@ultamation.com if they wish additional feature support.

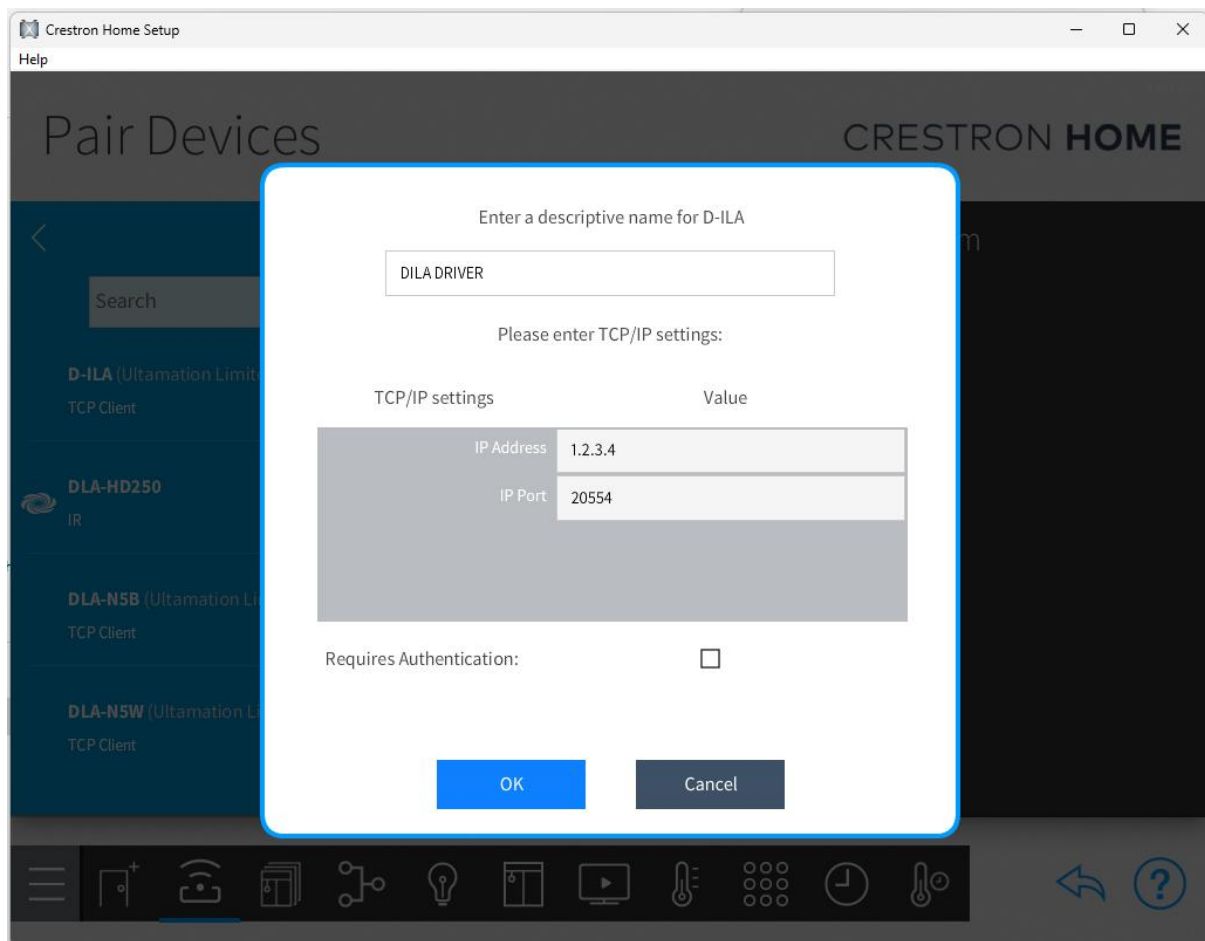
SETUP FOR CRESTRON HOME

Important: The driver's filename should be Ultamation.Ccd.JvcDilaProjectorTcp.pkg

Please rename it if it is different.

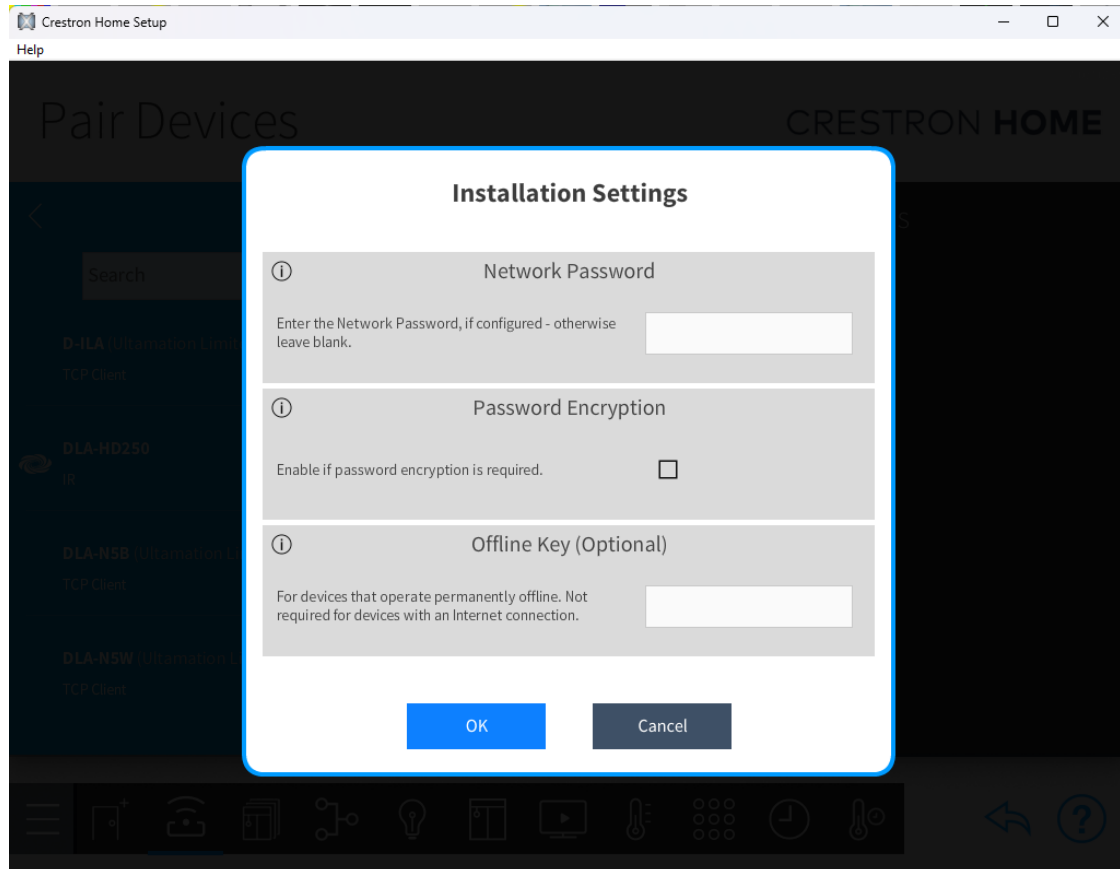
Newer models of this projector require a network password to be set up for 3rd party integrations to work, which include these drivers.

1. The driver can be found under Drivers / Display / JVC.
2. To add the driver to your Crestron Home system, follow these steps:
 - a. Room Selection: Ensure that a room is selected in your Crestron Home system. Click the + symbol next to the relevant driver.
 - b. Provide a descriptive name for the driver.
 - c. Enter your IP Address.
 - d. Enter your IP Port (the default is 20554).
 - e. Do **not** click Requires Authentication.

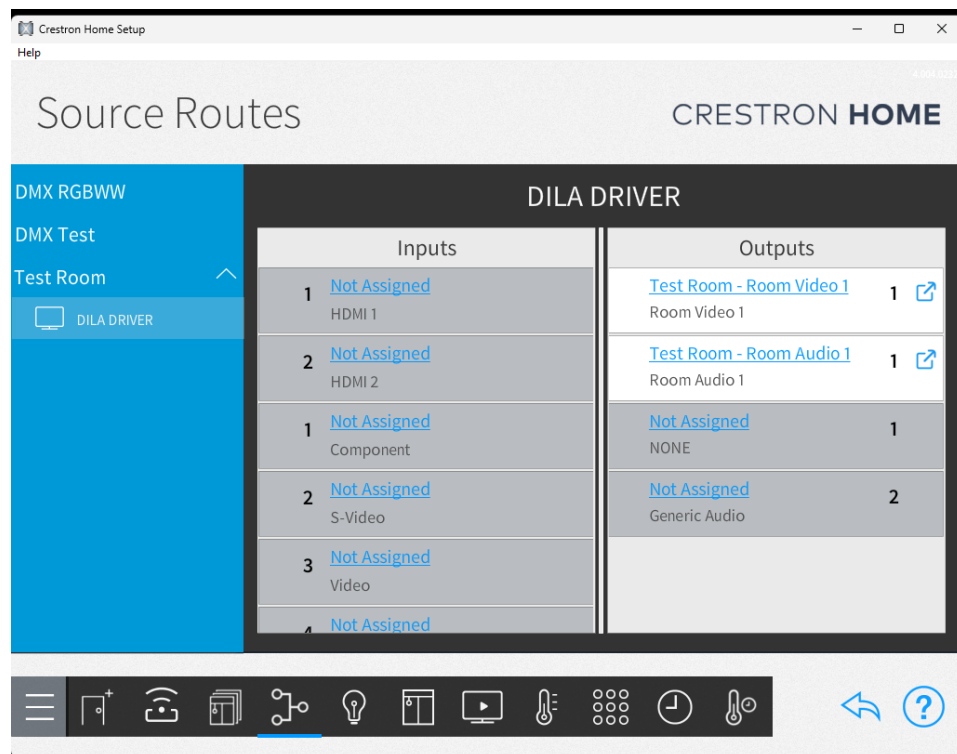


3. On the next screen (Installation Settings):
 - a. **Network Password** - You will be asked to enter a Network Password. Older models of the JVC D-ILA do not require this. However, if you've been asked to set a password on your projector, please enter this here.

- b. **Password Encryption** – If you have a newer model of the JVC D-ILA Projector (e.g. NZ800 and NZ900), this will require you to tick this box as Password Encryption is required.
- c. **Offline Key** – This is an optional "offline" key which can be requested under special circumstances. Please FIRST refer to the "Licencing" section below and then contact support@ultamation.com if you REQUIRE offline activation. If you do not have a cloud licence and do not enter a valid offline key, the system will function for 1 hour and then control will be suspended.

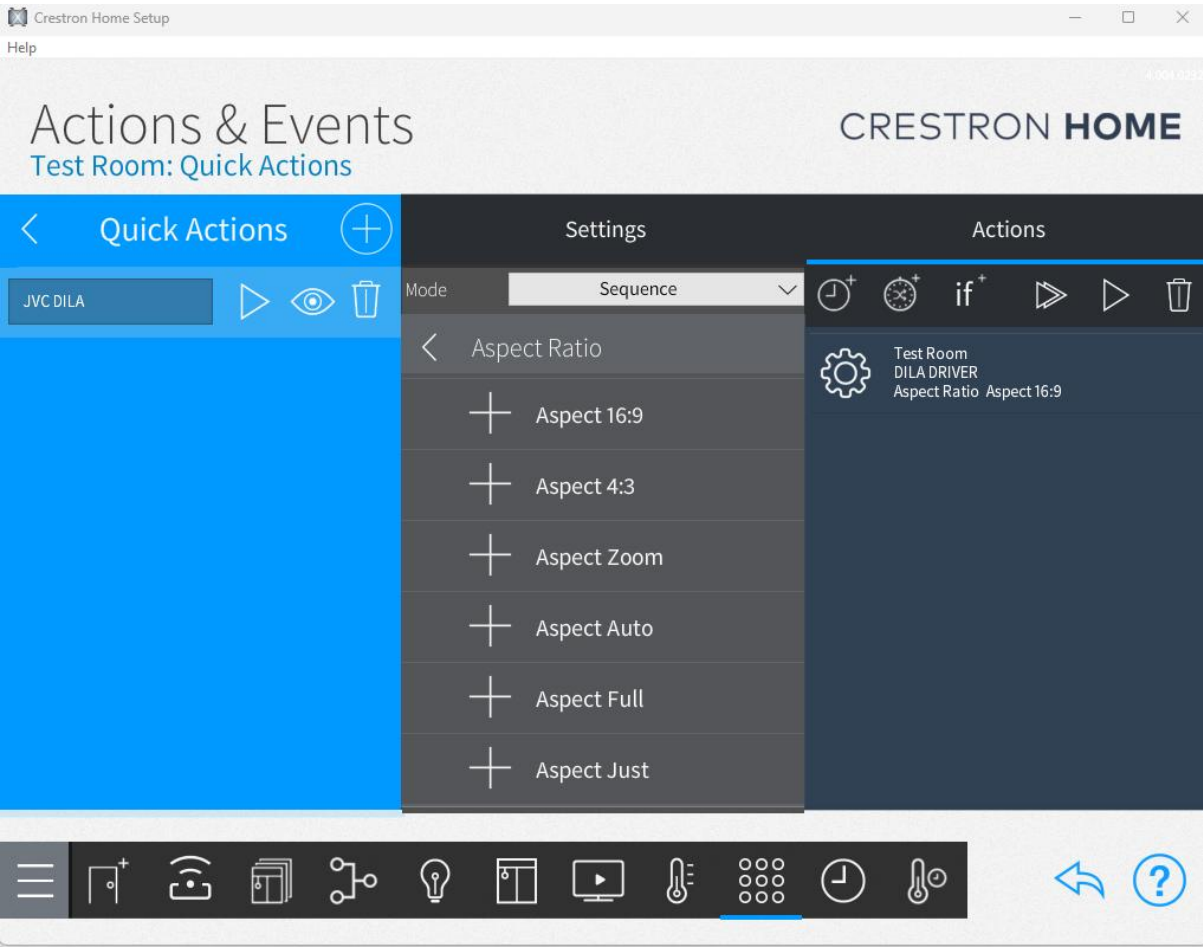


4. You can now configure the Source Routes for the projector as appropriate.



ASPECT RATIO CONFIGURATION

You can configure the available aspect ratios under Actions & Events. For example, you can Select your room -> Select Quick Actions -> Add a new Quick Action -> Set the mode as Sequence -> Select the Room -> Select DILA Driver -> Select Aspect Ratio and add the appropriate one.



SIMPL Wrapper Example

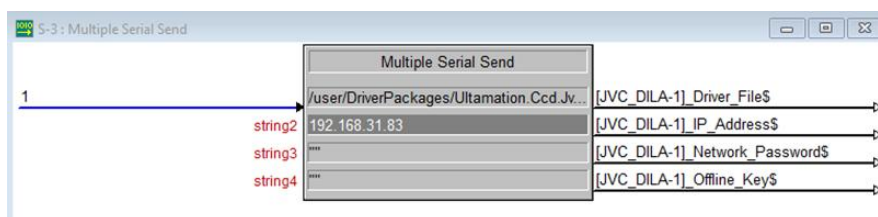
WRAPPING THE CRESTRON HOME DRIVER

An example SIMPL program has been included with this document, which shows how the JVC Dila Projector Crestron Home Driver can be used in a SIMPL program with the "Crestron Certified Drivers Display Ethernet v2.1 (cm)" module.

SETUP

The `Ultamation.Ccd.JvcDilaProjectorTcp.pkg` file needs to be loaded onto the processor. In this example it has been loaded into `/user/DriverPackages`. Another common location is `nvr` but can go into any convenient folder ensuring to use `/` in the path name.

- Ensure to *not* load it into a program folder as this will be overwritten when a program is loaded into that slot.
- Ensure that the path to the pkg file is inputted to DriverFile input on the module and that the file is named correctly. Here it is named "Ultamation.Ccd.JvcDilaProjectorTcp.pkg". A copy of this pkg file should be included in the zip file for this Wrapper Example.
- Ensure that the IP_Address is correctly set to point to your JVC Dila Projector.
- You will need to include your Network Password, if applicable.
- Should you require an offline key, please FIRST refer to the "Licencing" section below and then contact support@ultamation.com. Then that should be entered here.



The driver is loaded by pulsing the LoadDriver input. The offline key will also need to be set if required (UserAttribute_3_StringValue) and then sent (UserAttribute_3_SendItIn).



The Connect input must be pulsed to connect the driver to the Display. In the example program, the DriverLoaded output is used to trigger the Connect and UserAttribute_SendItIn inputs.

TABLE OF USER ATTRIBUTES

Name	Data Type	Default Value	Description
Network Password	String	""	This is the password for the network – if configured. Otherwise, leave blank.
Password Encryption	Boolean	""	True or False depending on if password encryption is required.
Offline Key	String	""	The Offline Key should it be required as mentioned in the Licencing section. Any string value can be added into the field to trigger the trial mode.

TABLE OF DISPLAY MODES

The JVC Dila Projector supports 22 different Display Modes. However, due to the limitations imposed by Crestron's Display Wrapper, only 15 Display Modes are available.

JVC Display Mode ID	JVC Display Mode (Friendly Name)	Corresponding Wrapper Select Display Mode
AspectZoom	Zoom	SelectDisplayMode_1
AspectAuto	Auto	SelectDisplayMode_2
AspectNative	Native	SelectDisplayMode_3
mode1	Install Mode Load 1	SelectDisplayMode_4
mode2	Install Mode Load 2	SelectDisplayMode_5
mode3	Install Mode Load 3	SelectDisplayMode_6
mode4	Install Mode Load 4	SelectDisplayMode_7
mode5	Install Mode Load 5	SelectDisplayMode_8
mode6	Install Mode Load 6	SelectDisplayMode_9
mode7	Install Mode Load 7	SelectDisplayMode_10
mode8	Install Mode Load 8	SelectDisplayMode_11
anaOff	Anamorphic Off	SelectDisplayMode_12
anaA	Anamorphic A	SelectDisplayMode_13
anaB	Anamorphic B	SelectDisplayMode_14
anaC	Anamorphic C	SelectDisplayMode_15
anaD	Anamorphic D	Not supported
remAspect16x9	Aspect 16:9	Not supported
remAspect4x3	Aspect 4:3	Not supported
remAspectZoom	Aspect Zoom	Not supported
remAspectAuto	Aspect Auto	Not supported
remAspectFull	Aspect Full	Not supported
remAspectJust	Aspect Just	Not supported

TROUBLESHOOTING

The log output from the driver can be retrieved with the following signals.



SUPPORT

If you have any issues with a driver or installation please let us know by contacting Ultamation support on support@ultamation.com and please include as much detail about your issue as possible, such a recent processor error log.

Licence verification messages are posted to the error log, so please ensure you have checked this.

LICENCING

This driver (including software, images and all other associated assets distributed as part of the purchased download package) is licenced on a PER PROCESSOR basis.

A purchase should not be completed without correct information as refunds cannot be issued for errors or changes made to details following purchase.

This is an electronic product and there is no physical delivery.

The driver is provided without any warranty with respect to the reliability of the controlled device or changes to device protocol. We will endeavour, through best efforts, to maintain the driver's functionality and any bug fixes will be provided free-of-charge. Additional functionality may be released as a variation of this driver and this will be a separate, purchasable, product.

CLOUD LICENCE

This driver contacts Ultamation's licencing server at startup. If the server finds a matching licence for the driver and processor then the driver will be licenced. Otherwise, the driver will check the offline licence key. If you purchase a licence AFTER you have loaded the driver, please reboot the system to see changes take effect.

If you purchased a licence **before** it was migrated to the cloud service, i.e. you have a licence key already, you must enter this into the **Offline Key** user attribute. If you purchased the driver **after** it was migrated, and you don't have a licence key, no further action is required.

If no licence exists for the product/processor the driver will enter a short trial period (ONE HOUR) to allow for verification of correct control or evaluation.

To request an OFFLINE key, please contact support@ultamation.com with your order details and a brief explanation why you REQUIRE offline activation. Ultamation reserve the right to refuse offline activation.

NOTE: Once an offline key has been issued no further licence changes will be granted. Moving the product to a new processor will require an additional licence purchase.