

SKY Q IP CRESTRON CERTIFIED DRIVER

Revision: 4.0.0

Date: 08 May 2025

LICENCING

Please visit <https://shop.ultamation.com/index.php/hikashop-category-information-menu-129/product/106-sky-q-ip-crestron-certified-driver> to obtain a licence for your Crestron processor.

SUMMARY

Ultamation's SKY Q IP Crestron Certified Driver (CCD) replicates the Sky Q remote controls over IP and is specifically designed to be used with applications that support the Crestron Certified Driver framework, such as Crestron Home, AV Framework, Studio and even SIMPL Windows with the appropriate CCD wrapper module.

This Datasheet provides the essential information for integrating Sky Q Main or Sky Q Mini Boxes with a Crestron Home processor.

We recommend testing the driver prior to purchase by using the 1 hour trial period.



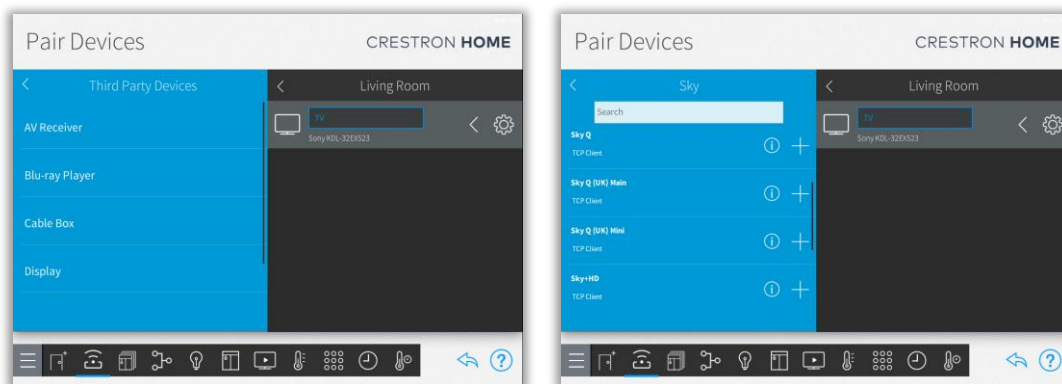
INSTALLATION NOTES

The Crestron system communicates with the Sky box directly via an IP connection. The Sky boxes must be set to a static IP address, and we would recommend a physical connection between the Sky boxes and the network.

The licence key is tied to the processor MAC address and can be used for multiple instances of the driver on the same processor. Therefore, if you have three sky boxes in the same project you will only require one licence.

CONFIGURING THE DRIVER IN CRESTRON HOME

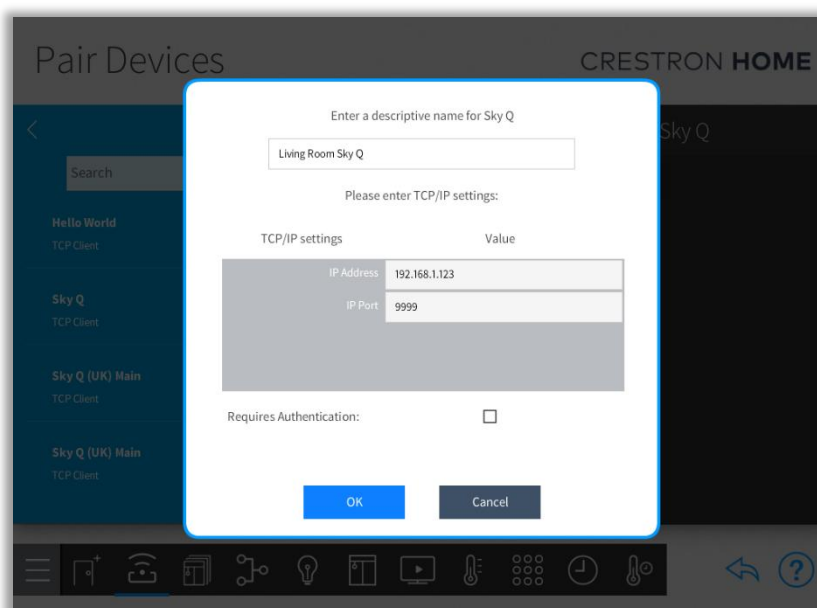
Add a 3rd Party Cable Box as you would normally within Crestron Home. Select “SKY” as the provider and you will see a number of Sky models listed (image on the right).



The drivers support various models of Sky box, so please choose the appropriate model for your installation.

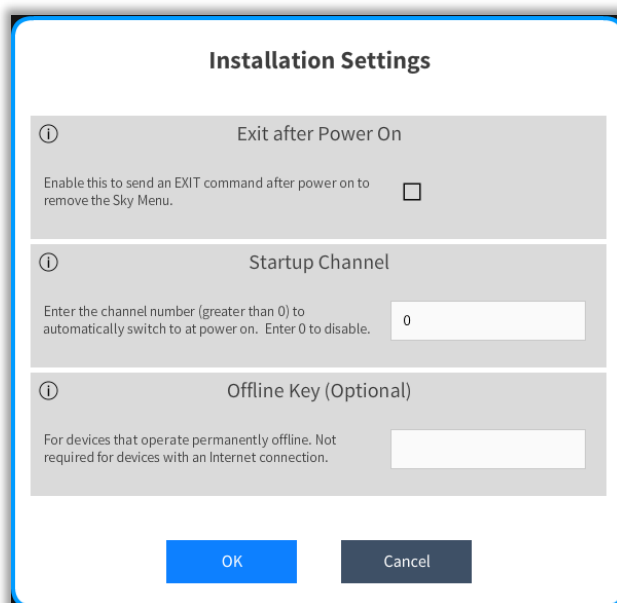
- ☀ In the case of Sky Q, ANY of the Sky Q TCP Client drivers will work as the same driver is used for all 3 models.

This example shows the Sky Q driver setup.



Add the driver and you will be asked to provide a name (this can be anything) and the device's IP address. This MUST match the static IP address you have assigned to the Sky box. The Port will be set to “9999”. Ignore this – it is not used. Requires Authentication should also be left unchecked. Press OK.

Next, you will be prompted to provide installation settings. Ticking the Exit after Power On checkbox will allow you to remove the Sky Menu after power on, and entering a Startup Channel number will automatically switch to this channel at power on. Enter 0 to disable.



Installation Settings

① **Exit after Power On**
Enable this to send an EXIT command after power on to remove the Sky Menu. ☐

① **Startup Channel**
Enter the channel number (greater than 0) to automatically switch to at power on. Enter 0 to disable.

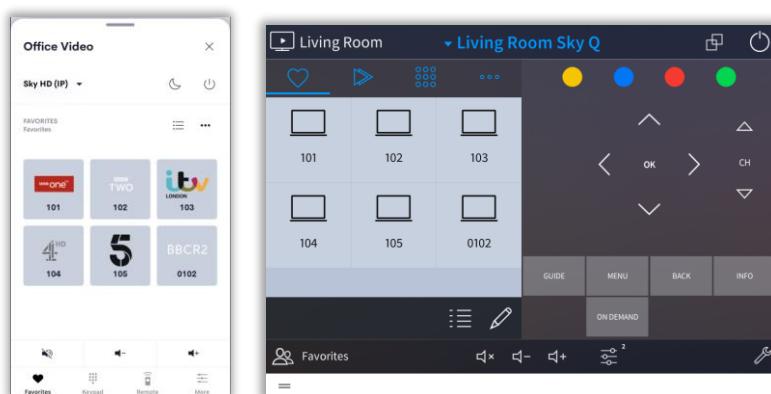
① **Offline Key (Optional)**
For devices that operate permanently offline. Not required for devices with an Internet connection.

OK **Cancel**

The driver is licenced via the cloud, but an optional 'offline' key can be request under special circumstances. Please **FIRST** refer to the 'Licencing' section below and then contact support@ultamation.com if you **REQUIRE** offline activation. The same offline key can be used for multiple driver instances in the same system.

If you wish to evaluate the driver you will be able to use it for 1 hour after each reboot. However, when you purchase a licence, you may need to reboot the processor to invoke the cloud licensing request.

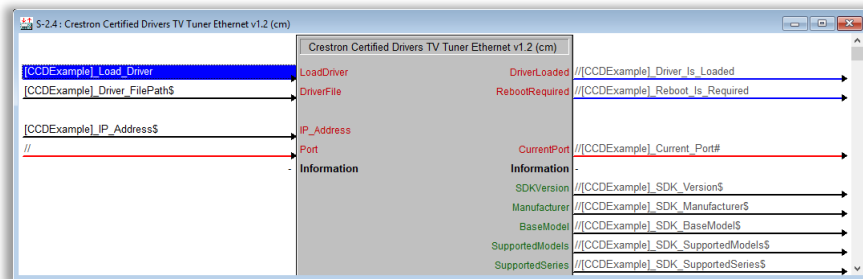
Finally, configure your local TV provider so that you can make use of the channel preset/favourites features of Crestron Home. You will need to complete your configuration by assigning the inputs/outputs of the Sky box for your Crestron Home system, and you will now have Crestron control of your Sky box.



USING THE DRIVER WITH SIMPL CCD WRAPPERS

The SIMPL Windows CCD wrappers can also be used to load the Sky driver.

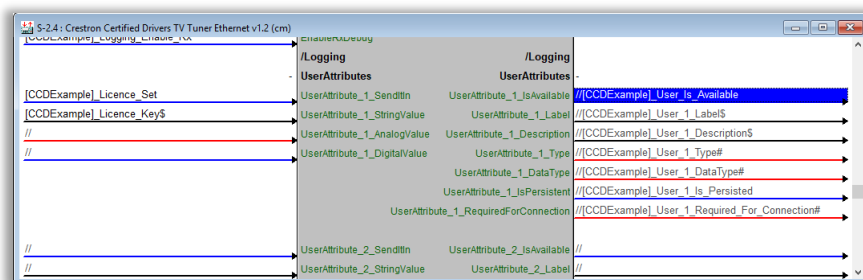
Please follow the instructions provided with the Crestron CCD “TV Tuner Ethernet” driver which is part of the Crestron standard database.



You may need to extract the .DLL file from the .PKG download file in order for the SIMPL wrappers to load the driver. The .PKG can be renamed to .ZIP and unzipped using any standard zip tool (such as the native windows zip support).

Copy the .DLL file to your processor and ensure that the file paths are correct so that the CCD Wrapper driver can load the driver. We recommend that you follow Crestron's best practice for driver locations as described in the CCD documentation.

If you are using an offline key, you must provide the licence key to the module in SIMPL. This is accomplished by passing the key string value into User Attribute 1 on the CCD wrapper module.



SUPPORT

If you have any issues with the driver or installation that are not addressed in this datasheet, please let us know by contacting Ultamation support on support@ultamation.com and please include as much detail about your issue as possible, such a recent processor error log.

Licence verification messages are posted to the error log, so please ensure you have checked this.

LICENCE

This integration solution (including software, images and all other associated assets distributed as part of the purchased download package) is licenced on a PER PROCESSOR basis.

A purchase should not be completed without correct information as refunds cannot be issued for errors or changes made to details following purchase.

The integration solution is provided without any warranty with respect to the reliability of the controlled device or changes to device protocol. We will endeavour, through best efforts, to maintain the integration solution's functionality and any bug fixes will be provided free-of-charge. Additional functionality may be released as a variation of this integration solution and this will be a separate, purchasable, product.

CLOUD LICENCE

This integration solution contacts Ultamation's licencing server at startup. If the server finds a matching licence for the integration solution and processor then the integration solution will be licenced. Otherwise, the integration solution will check the offline licence key. If you purchase a licence after you have loaded the integration solution, please reboot the system to see changes take effect.

If you purchased a licence before it was migrated to the cloud service, i.e. you have a licence key already, you must enter this into the Offline Key user attribute. If you purchased the integration solution after it was migrated, and you don't have a licence key, no further action is required.

If no licence exists for the product/processor the integration solution will enter a short trial period (ONE HOUR) to allow for verification of correct control or evaluation.

To request an OFFLINE key, please contact support@ultamation.com with your order details and a brief explanation why you REQUIRE offline activation. Ultamation reserve the right to refuse offline activation.

NOTE: Once an offline key has been issued no further licence changes will be granted. Moving the integration solution to a new processor will require an additional licence purchase.