

## AQUAVISION TV

Revision: 1.03

Date: 14 October 2024

### LICENCING

Please visit <https://shop.ultamation.com/index.php/product/125-aquavision-crestron-certified-driver-for-crestron-home> to obtain a licence key for your Crestron processor.

### MODULE DESCRIPTION

This driver was designed for TVs released after 2023, if you have an older model, please use the legacy driver. This driver supports the following functionality:

- ✿ IP connection (static address required) (TCP module only)
- ✿ Serial connection (Serial module only)
- ✿ Discrete Power Control
- ✿ Power Feedback
- ✿ Discrete Input Selection
- ✿ Discrete Volume Control
- ✿ Volume Feedback
- ✿ Discrete Mute Control
- ✿ Mute State Feedback
- ✿ For Android based screens (Pinnacle)
  - DPad Controls
  - Enter
  - Back
  - Colour Buttons
  - Info

Even though the unit may support additional functionality, this may not be exposed within Crestron Home. Manufacturers should contact Ultamation on [support@ultamation.com](mailto:support@ultamation.com) if they wish additional feature support.

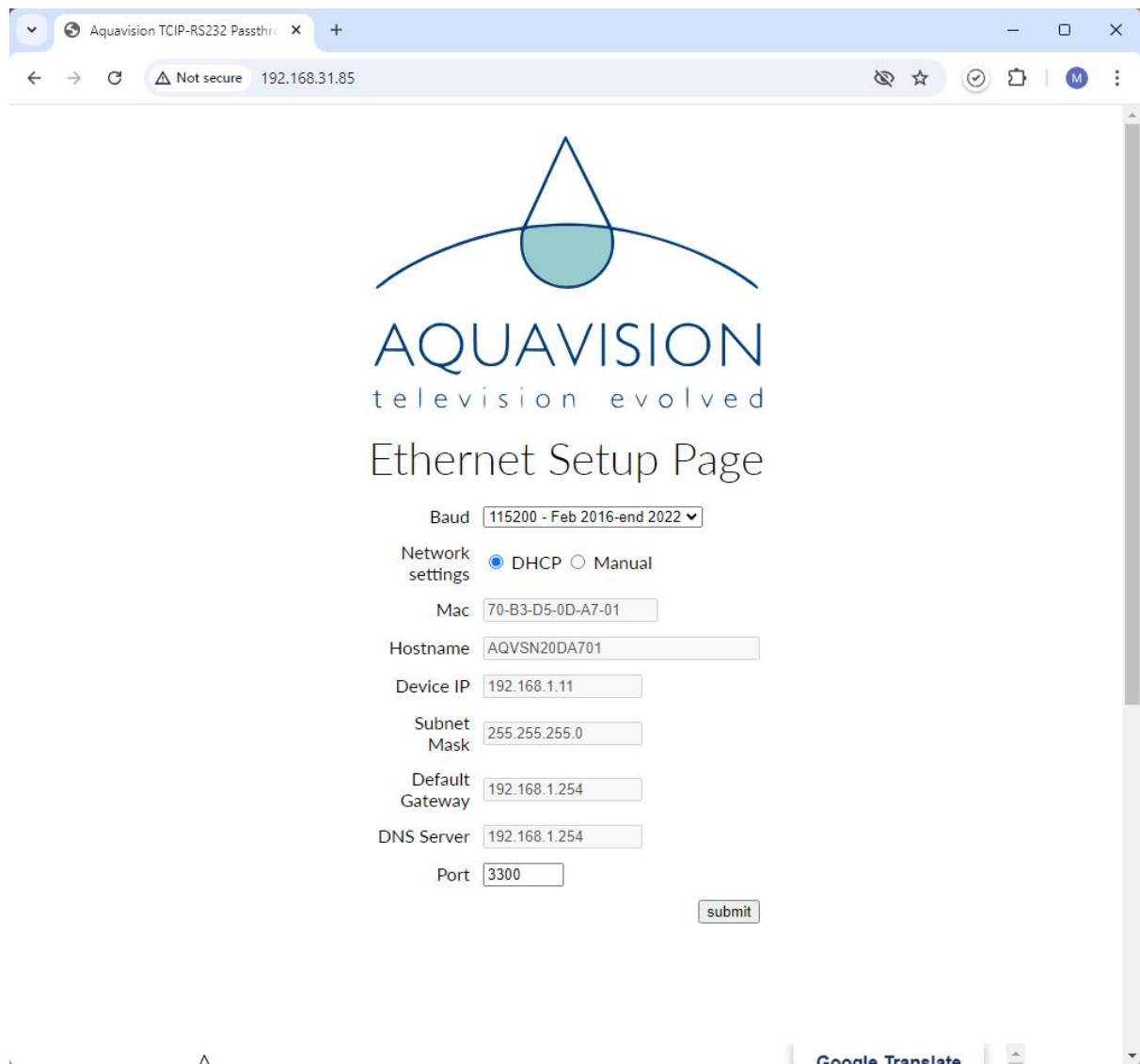
## INSTALLATION NOTES

For help with setting up Aquavision IP/Serial control, please refer to link below.

<https://aquavision.tv/wp-content/uploads/2016/03/IP-Setup-details.pdf>

Please note – if you are using the Android based Pinnacle range of TVs, for IP control, we use the IP Board's IP Address, not the IP Address of the Android TV.

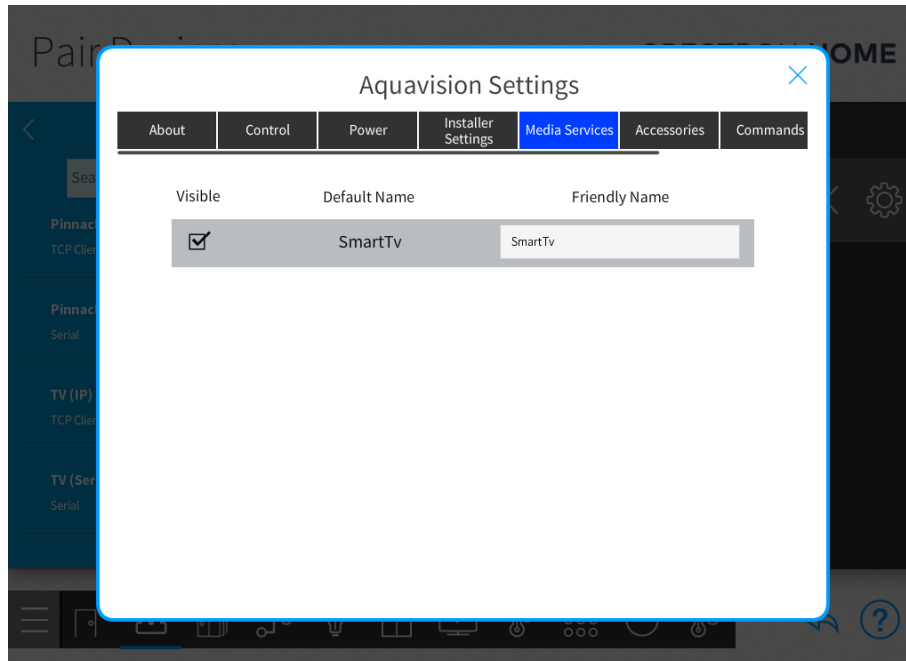
The port, by default on the IP Board, should be 3300 (older versions may default to 10001), which is also set as the default in the driver. This can be changed/checked on the TV, by going to the IP Address of the IP Board within a web browser. Example image below.



The screenshot shows a web browser window with the address bar displaying "192.168.31.85". The page title is "Aquavision TCIP-RS232 Passthru". The main content area features the Aquavision logo, which consists of a stylized blue water drop above the word "AQUAVISION" in a serif font, with "television evolved" in a smaller sans-serif font below it. The page is titled "Ethernet Setup Page". Below the title, there are several input fields and a "submit" button. The "Baud" field is a dropdown menu set to "115200 - Feb 2016-end 2022". The "Network settings" section has two radio buttons: "DHCP" (selected) and "Manual". The "Mac" field contains "70-B3-D5-0D-A7-01". The "Hostname" field contains "AQVSN20DA701". The "Device IP" field contains "192.168.1.11". The "Subnet Mask" field contains "255.255.255.0". The "Default Gateway" field contains "192.168.1.254". The "DNS Server" field contains "192.168.1.254". The "Port" field contains "3300". A "submit" button is located at the bottom right of the form. At the bottom of the page, there is a "Google Translate" button.

## INSTALLER SETTINGS

**Licence Key** – Please enter your licence key purchased from [shop.Ultamation.com](http://shop.Ultamation.com) or leave as it is, to enter trial mode.



**Media Services** – To add smart TV features as a source within Crestron Home (for Android bases screens only); go to the Media Service Setting page and ensure SmartTV box is ticked. Changing the friendly Name here will, change the name shown, for the source, within the Crestron Home user app.

## SUPPORT

If you have any issues with a driver or installation please let us know by contacting Ultamation support on [support@ultamation.com](mailto:support@ultamation.com) and please include as much detail about your issue as possible, such a recent processor error log.

Licence verification messages are posted to the error log, so please ensure you have checked this.

## LICENCE

This module (including software, images and any and all other associated assets distributed as part of the purchased download package) is licenced on a PER PROCESSOR basis.

A licence key is generated at the point of purchase and is linked at that time to specific information that MUST be provided at the time of purchase. A purchase should not be completed without correct information as refunds cannot be issued for errors or changes made to details following purchase.

The licence key for each device will be delivered via email along with links to download the module. There is no physical delivery.

The module is provided without any warranty with respect to the reliability of the controlled device or changes to device protocol. We will endeavour, through best efforts, to maintain the module's functionality and any bug fixes will be provided free-of-charge. Additional functionality may be released as a variation of this module and this will be a separate, purchasable, product.