

# ORISEC INTRUDER ALARM DRIVER FOR CRESTRON HOME

Revision: 1.00  
Date: 6 July 2021

## CRESTRON HOME ONLY

This document describes the configuration of the Orisec Intruder Alarm Driver for Crestron Home only. This is the first third party intruder alarm driver that implements the native Crestron Security Alarm integration.

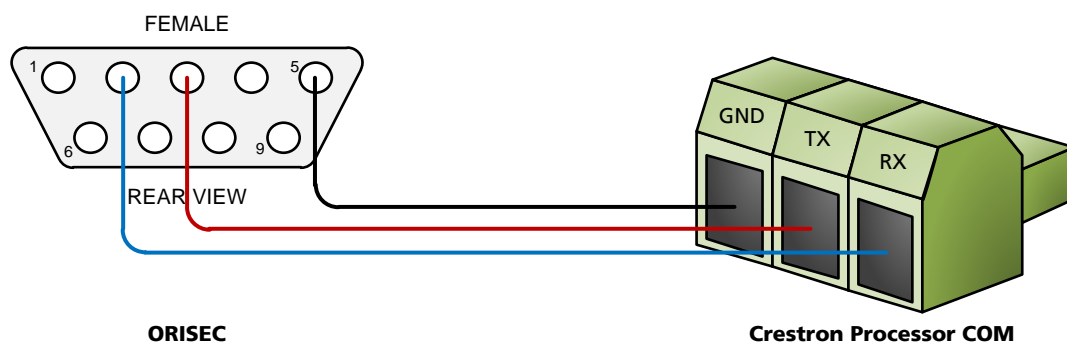
## ADDITIONAL READING

Please refer to the Using 3<sup>rd</sup> Party driver document for instructions on installation and configuration of the driver with Crestron Home.

## INSTALLATION NOTES

The Crestron system is connected to the Orisec alarm panel over an RS232 connection. This must be installed onto one of the comm ports of the alarm panel, and the port must be configured to "Crestron Protocol" as 9600 baud (8 data bits, No parity, 1 stop bit). The correct passcode for the alarm panel must also be entered within Crestron Home when installing the driver.

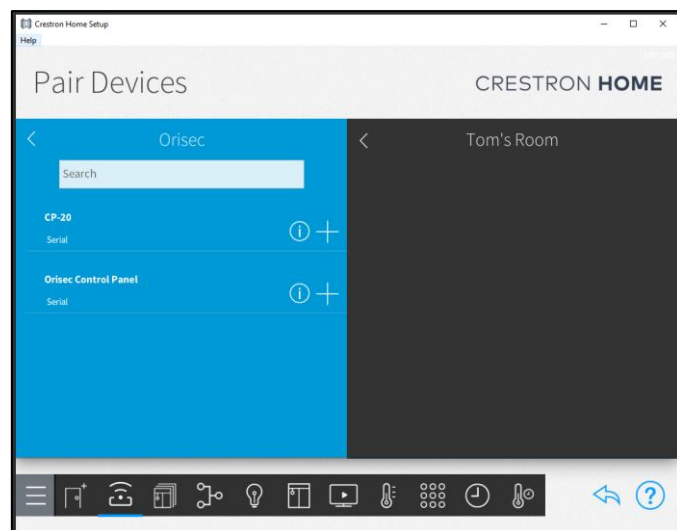
The RS232 connection is wired as shown below – this requires an RS232 interface cable, available from Orisec:



## ADDING THE ORISEC DRIVER

After importing the driver, the Orisec driver will be found under:

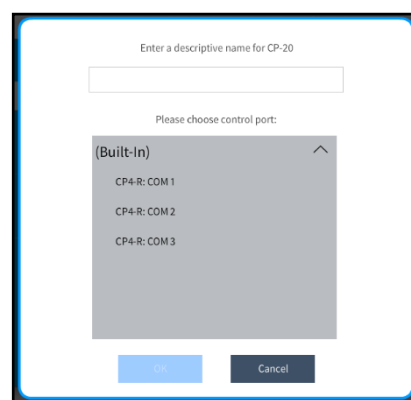
Devices > Drivers > Security Systems > Orisec



Ensure a room is selected, and then click on the '+' against the Orisec Control Panel.

You will be asked to provide a descriptive name for the driver (this can be anything you like) and then to select one of the available COM Port.

After these options have been input, you will be required to enter a valid user code with suitable permissions to arm, disarm and reset the panel. The license key can also be entered at this point, if this is left blank, the driver will remain fully functional for one hour before it requires a valid license key.

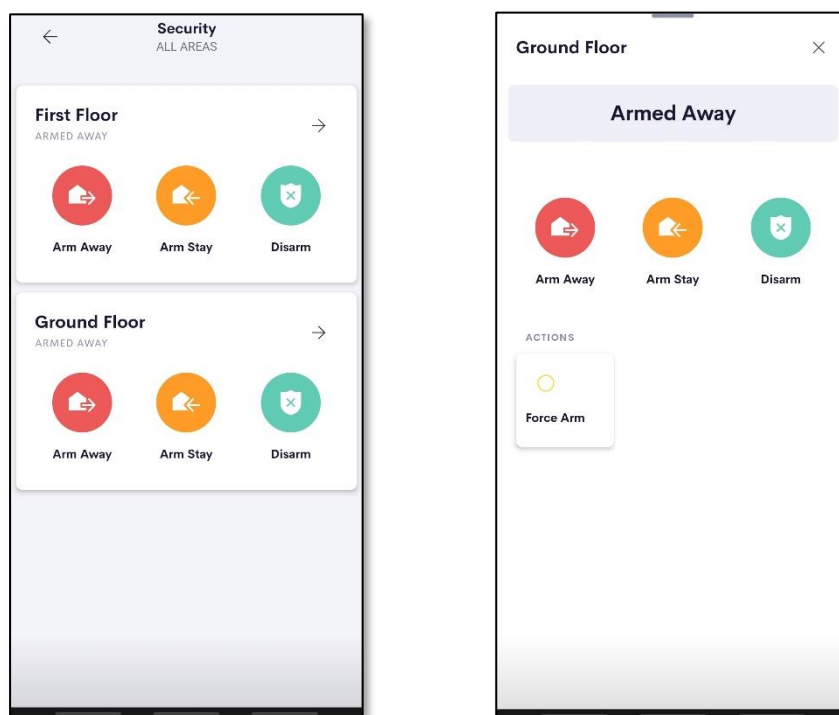


## MODULE DESCRIPTION

The driver provides integration with the Orisec Panel providing home-owner operation of the alarm settings for each distinct area. The areas or partitions should be automatically setup and integrated when the device is connected to Crestron Home and the driver is installed correctly. An example is shown below featuring two areas, Ground and First floor. The controls shown are described below.

The following controls are provided within Crestron Homes Security Tab:

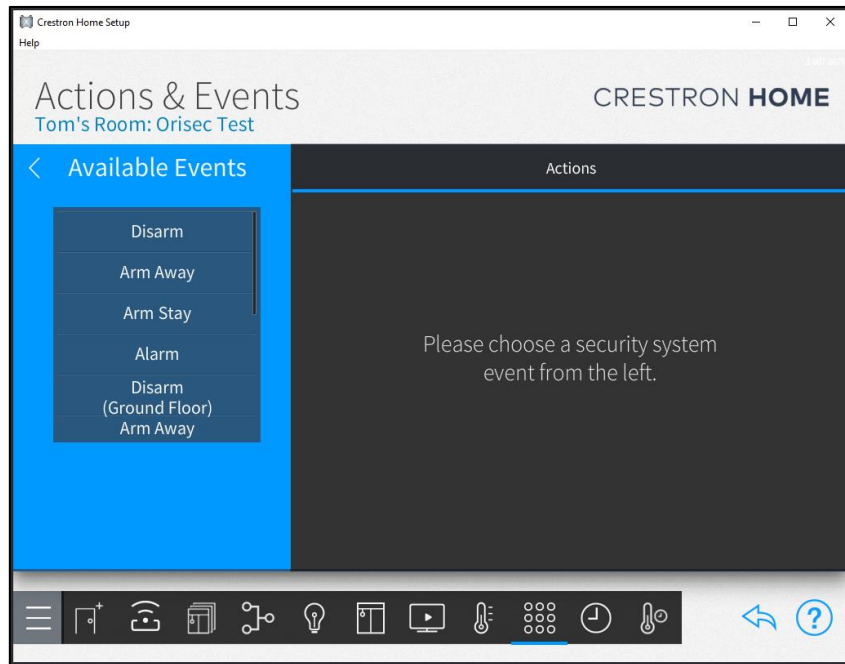
- 🌿 Arm Away - This will tell the Orisec Panel to fully arm the area.
- 🌿 Arm Stay - Similarly this will tell the Orisec Panel to partly arm the area to the settings for Stay1.
- 🌿 Disarm - This will tell the Orisec Panel to disarm the area.
- 🌿 Force Arm - In order to return and reset the partition/area after an alarm, the user will need to input the Force Arm action. This will turn off the alarm and return the area to the previous State. This can take a while to update within the UI although it happens immediately. Disarming and rearming to the required state will update the UI more responsively. The name of this function is not intuitive, due to a limitation of Crestron Home, it actually performs an Area Reset as per the Orisec protocol.



## EVENTS

There are four specific events which can be used to trigger actions within Crestron Home. These Events are triggered when an area changes state. The four states, and therefore events, are 'Disarm', 'Arm Away', 'Arm Stay' and 'Alarm'.

Additionally, each area has its own specific triggers for these four events which will only trigger on that specific area changing state.



## TROUBLESHOOTING

If you are having difficulty communicating with the alarm panel, please check the Crestron Home Panel configuration, that the RS232 cable is wired correctly and the com port settings are correct on the Orisec alarm panel.

## SUPPORT

If you have any issues with a driver or installation please let us know by contacting Ultamation support on [support@ultamation.com](mailto:support@ultamation.com) and please include as much detail about your issue as possible, such a recent processor error log.

## LICENCE

This module (including software, images and any and all other associated assets distributed as part of the purchased download package) is licenced on a PER PROCESSOR basis.

A licence key is generated at the point of purchase and is linked at that time to specific information that MUST be provided at the time of purchase. A purchase should not be completed without correct information as refunds cannot be issued for errors or changes made to details following purchase.

The licence key for each device will be delivered via email along with links to download the module. There is no physical delivery.

The module is provided without any warranty with respect to the reliability of the controlled device or changes to device protocol. We will endeavour, through best efforts, to maintain the module's functionality and any bug fixes will be provided free-of-charge. Additional functionality may be released as a variation of this module and this will be a separate, purchasable, product.