

## AGATH Serial or TCP Display Driver

Revision: 1.00

Date: 11 April 2023

### LICENCING

Please visit "<https://shop.ultamation.com/index.php/product/203-agath-ccd>" to obtain a licence key for your Crestron processor.

### MODULE DESCRIPTION

The AGATH Serial or TCP Display driver supports the following functionality:

- |                    |              |
|--------------------|--------------|
| • Source switching | • Keypad     |
| • Volume Controls  | • Navigation |
| • Mute Control     | • Transport  |
| • Power Controls   |              |

Even though the unit may support additional functionality, this may not be exposed within Crestron Home. Manufacturers should contact Ultamation on [support@ultamation.com](mailto:support@ultamation.com) if they wish additional feature support.

### INSTALLATION NOTES

The Crestron system communicates with the AGATH device directly via a serial connection or via a TCP connection. Please refer to the AGATH documentation for set up of AGATH with either serial or TCP control.

The licence key is tied to the processor MAC Address and can be used for multiple instances of the module on the same processor. Therefore, if you have more than one RTI Audio Switcher Device, you will require only one licence, for control of all devices.

### CRESTRON HOME SETUP

1. The driver can be found under Drivers / Display/ AGATH.
2. Add either Serial or IP version of the driver.
3. Make sure the connection info is as below for the selected driver type.

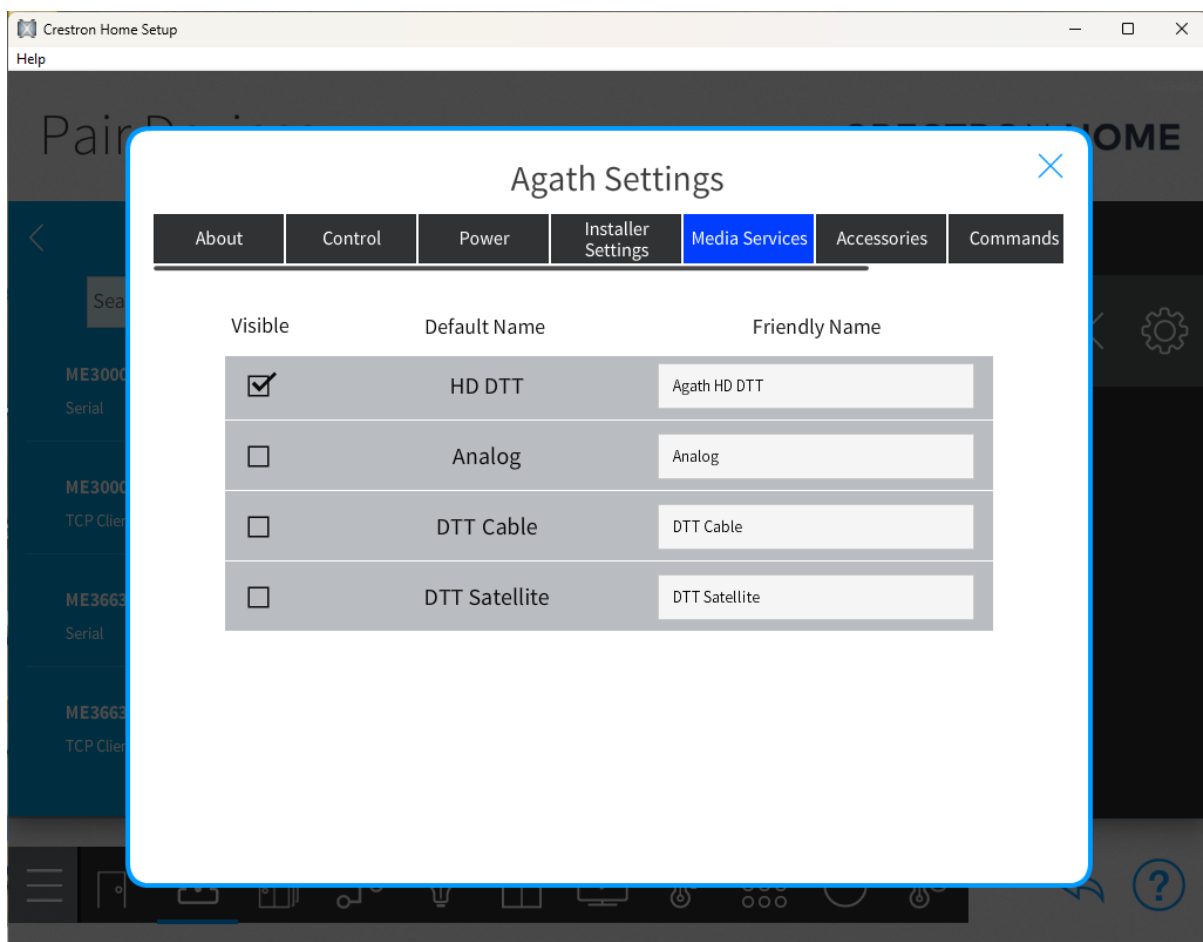
#### Serial Control

- Baud Rate – 9600
- Parity – None
- Data Bits
- Stop Bits – 8
- HW Shake – None
- SW Shake – None

#### IP Control

- IP Address – xxx.xxx.xxx.xxx
- Port – 10001 (Default)

- 4) Enter the licence key you bought from [shop.ultamation.com](http://shop.ultamation.com) or leave field blank, to use the 1-hour trial period of the driver. The 1-hour trial period can be re-started by rebooting the Crestron Home Processor.
- 5) Set Up Routing Info for the AGATH display, within the "Source Routes" set up page.
- 6) For terrestrial TV control, you need to go into the setting section of the AGATH driver, tick the visibility of the corresponding input you are using. This option will create another input, but this input will also act like a source and display generic controls for AGATH.



## SUPPORT

If you have any issues with a driver or installation, please let us know by contacting Ultamation support on [support@ultamation.com](mailto:support@ultamation.com) and please include as much detail about your issue as possible, such as a recent processor error log.

Licence verification messages are posted to the error log, so please ensure you have checked this.

## LICENCE

This module (including software, images and all other associated assets distributed as part of the purchased download package) is licenced on a PER PROCESSOR basis.

A licence key is generated at the point of purchase and is linked at that time to specific information that MUST be provided at the time of purchase. A purchase should not be completed without correct information as refunds cannot be issued for errors or changes made to details following purchase.

The licence key for each device will be delivered via email along with links to download the module. There is no physical delivery.

The module is provided without any warranty with respect to the reliability of the controlled device or changes to device protocol. We will endeavour, through best efforts, to maintain the module's functionality and any bug fixes will be provided free-of-charge. Additional functionality may be released as a variation of this module and this will be a separate, purchasable, product.