

# AURORA VPX & VLX DRIVER FOR CRESTRON HOME

Revision: 1.00

Date: 03 January 2023

## LICENCING

Please visit <https://shop.ultamation.com/index.php/product/198-aurora-for-crestron-home> to obtain a licence key for your Crestron processor.

## ADDITIONAL READING

Please refer to the Using 3<sup>rd</sup> Party driver document for instructions on installation and configuration of the driver with Crestron Home.

## SUPPORTED INSTALLATION

The driver is designed to integrate Aurora VPX & VLX devices, via IP control. Successful switching is entirely dependent upon suitable configuration of the Aurora Encoders, Decoders, and network switch.

## MODULE DESCRIPTION

The driver provides switching control of Aurora VPX & VLX devices via the Crestron Home AV switching integration.

Devices > AV Switcher > Aurora

There are three drivers which enable the full selection of input and outputs available with Aurora VPX or VLX.

Driver Name	AV Over IP	Encoder	Decoder
Description	Sets the stream for a Decoder from a specified Encoder.	Sets the HDMI input to Stream from the Encoder	Sets the Decoder output to either STREAM, HDMI-1 or HDMI-2
Inputs	16	2	3
Outputs	16	1	1

The AV Over IP driver can be used by itself or in conjunction with the Encoder and/or Decoder drivers.

When used by itself, sources and displays should be attached to the inputs and the outputs of the AV Over IP driver within the routing section of Crestron Home.

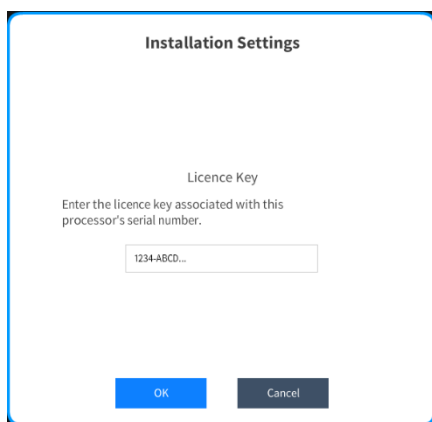
When used together the Sources need to be added to the HDMI inputs of the Encoders/Decoders and the displays to each Decoder HDMI outputs. The Stream output of the Encoders needs to be connected to the inputs of the AV Over IP Driver and the Decoders Stream output to the corresponding AV Over IP Driver output, in the routing section.

## Adding the Drivers – All drivers

Ensure a room is selected, and then click on the '+' against the Aurora device driver.

You will be asked to provide a descriptive name for the virtual switcher – this can be anything you wish.

The device will be added to your system and you will be asked to enter a licence key to ensure that the integration will function after the initial one-hour trial period.



The licence key will be emailed to you with your order acknowledgement. The same key can be used for multiple switcher instances in the same system (though different Crestron Home systems will require different licence keys). If you do not enter a valid licence key here, the system will function for 1 hour and then Aurora control will be suspended. The licence key can be entered at any time after initial setup without having to reconfigure each tile.

Once added, the switcher will be available within the Source Route configuration within Crestron Home. Simply assign your existing sources to the inputs, and display/audio devices to outputs.

## Adding the AV Over IP Driver

**IP ADDRESS** - You must specify the IP address of the FIRST Decoder. This represents OUTPUT 1 of the virtual matrix. Each Aurora decoder should be configured with IP addresses in a contiguous run from decoder-1 IP Address ; i.e.

Output-2 = decoder-1 + 1,

Output-3 = decoder-1 + 2, and so on.

**HOST ID** - The Host Id need to be set to the Host ID of the first Encoder. Each aurora encoder should be configured with the HostName, in a contiguous run from encoder-1 Host Name – i.e.

Encoder-2 HostName = encoder-1 HostName + 1

Encoder-3 Hostname = encoder-2 HostName + 2, and so on.

The IP control port should normally be left at 6970, and leave "Requires Authentication" unchecked.

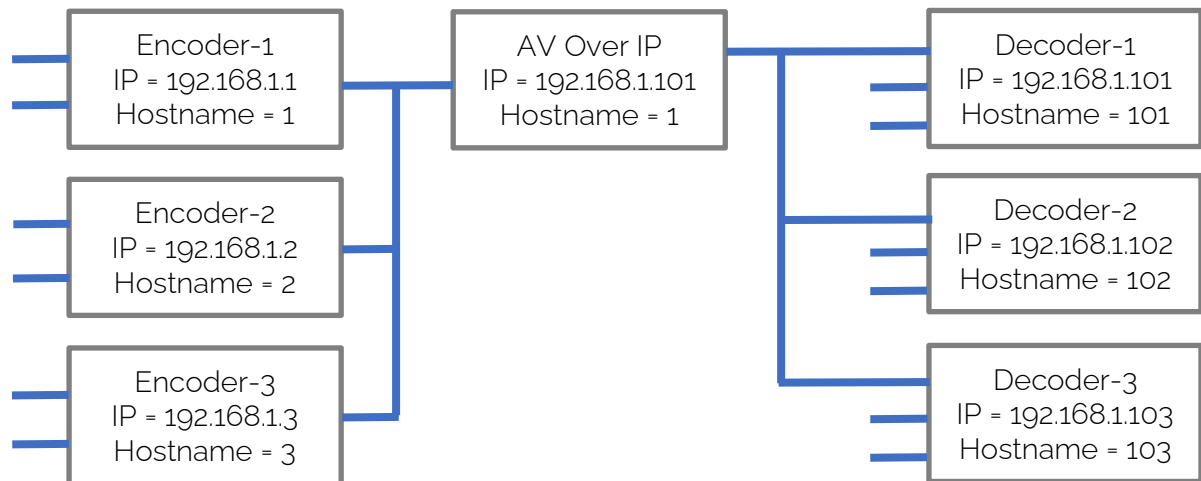
## Adding the Encoder and Decoder Drivers

**IP ADDRESS** - If you wish to control the Encoders stream output or the Decoders HDMI output, each Encoder and each Decoder requires an instance of the Encoder or Decoder driver. Each driver instance needs to be IP Addressed to the Encoder's or Decoder's IP Address you wish to control.

When you select a source for a zone, the module will send the appropriate switching commands to the Aurora Decoder and/or Encoder box.

## Example Set Up

Example shows 3 Encoder drivers with two source inputs connecting to the main AV Over IP driver on the left. And on the right, 3 Decoder with the stream input attached to the AV Over IP driver, and two extra local source inputs.



## SUPPORT

If you have any issues with a driver or installation please let us know by contacting Ultamation support on [support@ultamation.com](mailto:support@ultamation.com) and please include as much detail about your issue as possible, such a recent processor error log.

Licence verification messages are posted to the error log, so please ensure you have checked this.

## LICENCE

This module (including software, images and any and all other associated assets distributed as part of the purchased download package) is licenced on a PER PROCESSOR basis.

A licence key is generated at the point of purchase and is linked at that time to specific information that MUST be provided at the time of purchase. A purchase should not be completed without correct information as refunds cannot be issued for errors or changes made to details following purchase.

The licence key for each device will be delivered via email along with links to download the module. There is no physical delivery.

The module is provided without any warranty with respect to the reliability of the controlled device or changes to device protocol. We will endeavour, through best efforts, to maintain the module's functionality and any bug fixes will be provided free-of-charge. Additional functionality may be released as a variation of this module and this will be a separate, purchasable, product.