

KRAMER AV SWITCHER DRIVER FOR CRESTRON HOME

Revision: 1.00

Date: 13 January 2022

LICENCING

Please visit <https://shop.ultamation.com/index.php/hikashop-category-information-menu-129/product/135-avpro-edge-for-crestron-home> to obtain a licence key for your Crestron processor.

ADDITIONAL READING

Please refer to the Using 3rd Party driver document for instructions on installation and configuration of the driver with Crestron Home.

SUPPORTED INSTALLATION

The driver is designed to integrate Kramer matrix devices via IP control or serial; that support Kramer Protocol 3000. At present, configurations are limited to 15 inputs and 15 outputs. Control of peripheral devices via the receiver I/O is not currently supported.

MODULE DESCRIPTION

The driver provides switching control of Kramer matrix devices via the Crestron Home AV switching integration. At present, control of devices via the Kramer ports (IR, CEC) is **not** supported.

Crestron Home will not reflect route changes made via the Kramer front panel or other control. Crestron Home is expected to be the primary control.

Each matrix to be controlled will require a separate definition using the driver, but the same licence key can be used for multiple matrices on a single processor.

After importing the driver (see the general "How to" document), the switcher will be found under:

Devices > AV Switcher > Kramer

Adding the Matrix

Ensure a room is selected, and then click on the '+' against the appropriate device.

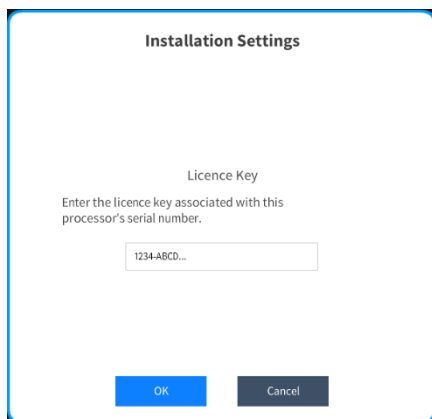
You will be asked to provide a descriptive name for the switcher – this can be anything you wish. You will also need to specify the IP address for the matrix.

For the TCP driver, set the IP control port to 5000, and leave "Requires Authentication" unchecked.

For the Serial driver set the following

- Baud Rate = 115200
- Parity = None
- Data Bits = 8
- Stop bits = 1
- SW Shake = None

The device will be added to your system and you will be asked to enter a licence key to ensure that the integration will function after the initial one-hour trial period.



The licence key will be emailed to you with your order acknowledgement. The same key can be used for multiple switcher instances in the same system (though different Crestron Home systems will require different licence keys). If you do not enter a valid licence key here, the system will function for 1 hour and then Kramer control will be suspended. The licence key can be entered at any time after initial setup without having to reconfigure each tile.

Once added, the switcher will be available within the Source Route configuration within Crestron Home. Simply assign your existing sources to the inputs, and display/audio devices to outputs.

When you select a source for a zone, the module will send the appropriate switching commands to the matrix. Switching can be verified via the matrix front panel.

SUPPORT

If you have any issues with a driver or installation please let us know by contacting Ultamation support on support@ultamation.com and please include as much detail about your issue as possible, such a recent processor error log.

Licence verification messages are posted to the error log, so please ensure you have checked this.

LICENCE

This module (including software, images and any and all other associated assets distributed as part of the purchased download package) is licenced on a PER PROCESSOR basis.

A licence key is generated at the point of purchase and is linked at that time to specific information that MUST be provided at the time of purchase. A purchase should not be completed without correct information as refunds cannot be issued for errors or changes made to details following purchase.

The licence key for each device will be delivered via email along with links to download the module. There is no physical delivery.

The module is provided without any warranty with respect to the reliability of the controlled device or changes to device protocol. We will endeavour, through best efforts, to maintain the module's functionality and any bug fixes will be provided free-of-charge. Additional functionality may be released as a variation of this module and this will be a separate, purchasable, product.