

DA VINCI FIREPLACE DRIVER FOR CRESTRON HOME

Revision: 1.00
Date: 14 May 2021

LICENCING

Please visit <https://shop.ultamation.com/index.php/product/153-travis-davinci-custom-fireplaces-for-crestron-home> to obtain a licence key for your Crestron processor.

CRESTRON HOME ONLY

This document describes the configuration of the Travis Industries DaVinci Fireplace Driver for Crestron Home only.

ADDITIONAL READING

Please refer to the Using 3rd Party driver document for instructions on installation and configuration of the driver with Crestron Home.

MODULE DESCRIPTION

The module provides integration with DaVinci Custom Fireplaces, providing home-owner operation of the fireplace properties from a Crestron Home user interface.

The following controls are provided (where available on each device):

-  On and Off for the fireplace flame, fan, and LED
-  Sliders to change the level of the flame, heat fan, and LEDs
-  Feedback display for temperature, humidity, and dew point

DISCLAIMER

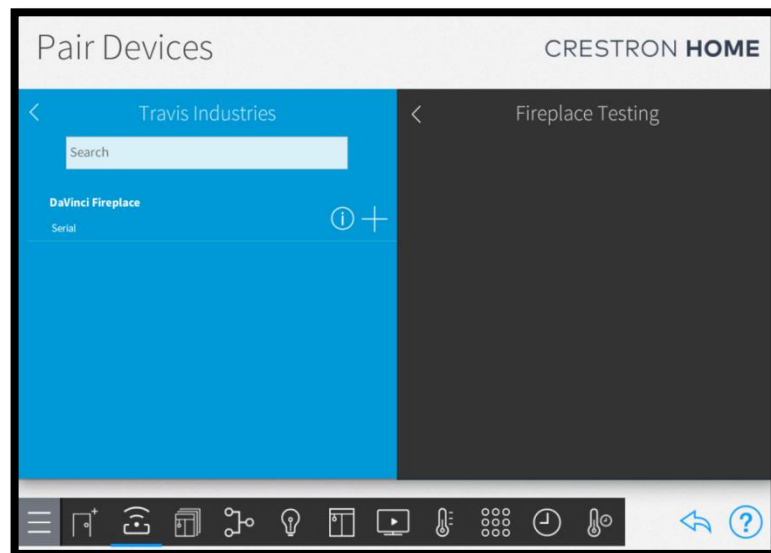
Use of the Ultamation driver to control a fireplace is entirely at the integrator/home owner's risk. Ultamation does not assume or accept any liability whatsoever for operational issues that may result through the use of this integration module.

Adding the DaVinci Fireplace Device

After importing the driver, the fireplace driver will be found under:

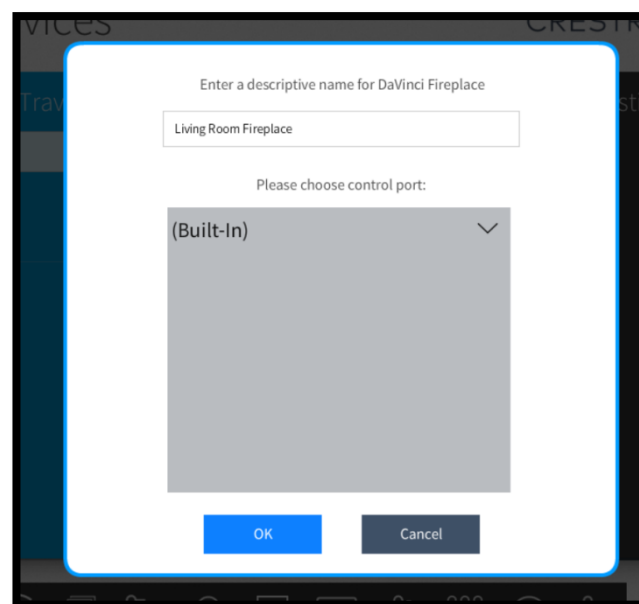
Drivers > Fireplace > Travis Industries > DaVinci Fireplace

Ensure a room is selected, and then click on the '+' against the DaVinci Fireplace.



You will be asked to provide a descriptive name for the driver (this can be anything you like). Then choose a control port, click the drop down arrow on the right to show options.

Click Ok when done.

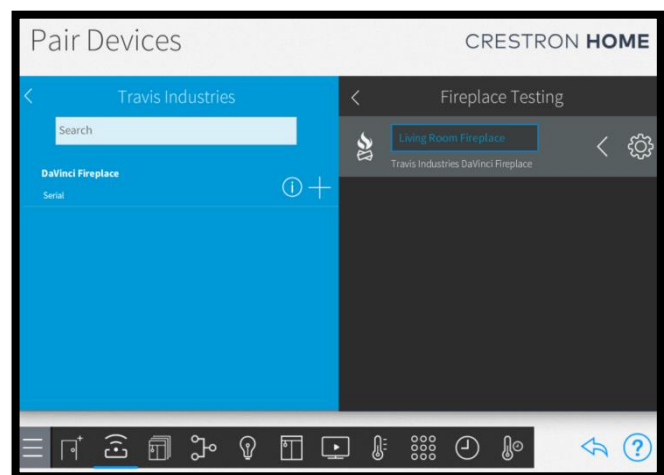


The device will be added to your system and you will be asked to enter some more settings.

The field is for entering the licence key to ensure continued operation of the Fireplace integration. This licence key will be emailed to you upon successful payment of the product licence from the Ultimatum shop. The same key should be used in each tile in the system (though different Crestron Home systems will require different licence keys).

If you do not enter a VALID licence key for your processor, the integration will function for 1 hour and then stop. Informational messages will be added to the processor's error log – please check [here](#) if you experience loss of function after an hour.

The fireplace device will then be shown in your selected room.



CONTROLLING THE FIREPLACE

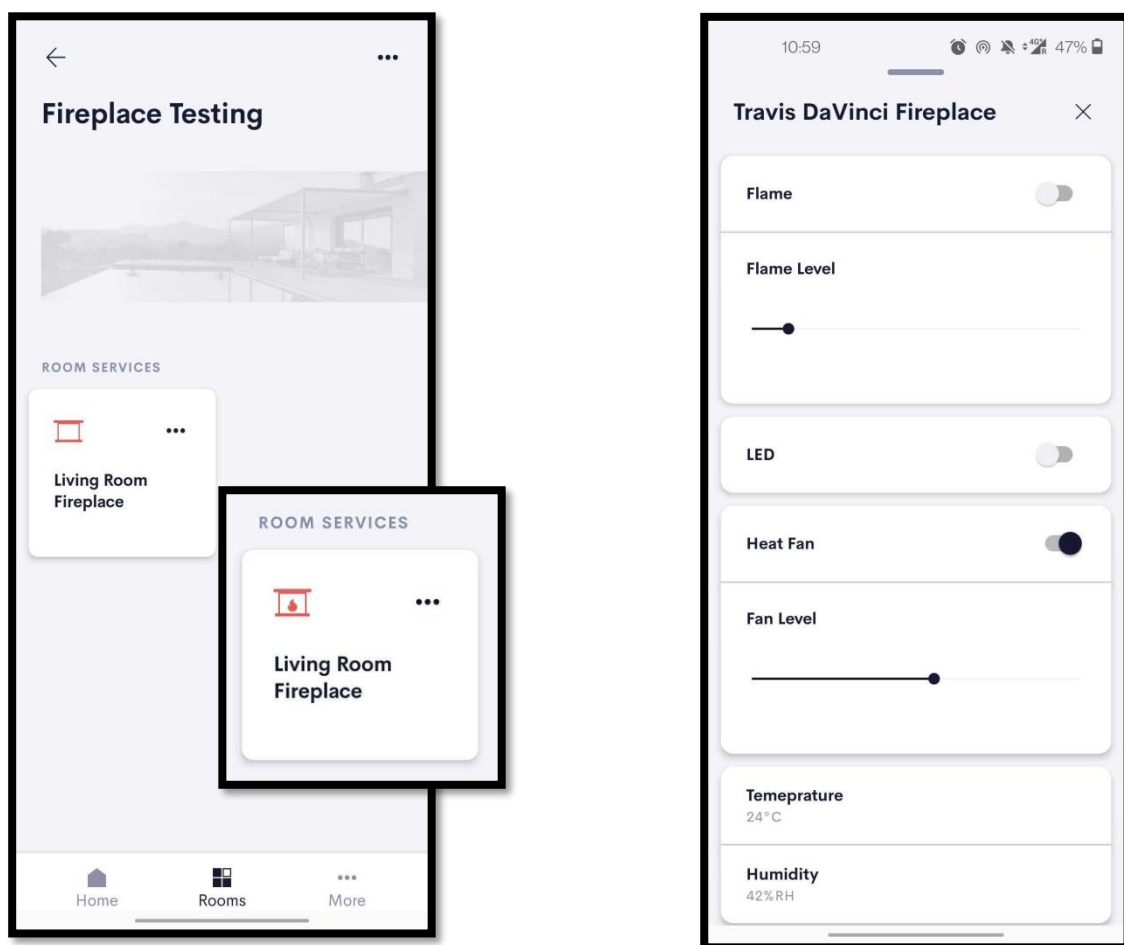
Once the device has been added it will appear in the Crestron Home app under the chosen room.

Pressing the fireplace tile will toggle the fireplace Flame to turn on or off. The icon reflects the flame state too.

Press the three dots in the top right corner of the tile to open the properties page, shown below.

In here there are on/off toggle switches for the Flame, LED, and Heat Fan, plus sliders to control the level of each setting. Only the controls which are available on each fireplace will be visible; if a fireplace doesn't have controllable LEDs, this slider will not be visible on the settings page.

Displayed at the bottom are the current values for temperature, humidity, and dew point.








QUICK ACTIONS & SEQUENCES

A number of functions are exposed to sequences via Crestron Home's quick actions allowing the mechanism to be controlled via automation.

The device being controlled involves high temperatures and flames. Although the device is manufactured to be safe, it is **STRONGLY RECOMMENDED** that any automated operation can only take place when a suitable human is present. Ultamation accept no liability for incorrect operation of the device.

Note: Not all functions are available on all devices.

-  Flame State
This allows you to turn the flame on and off.
-  Flame Level
This allows a sequence to control the flame level (if capable)
-  LED On/Off
Turns on the fireplace LED (if fitted)
-  Fan On/Off
Turns on/off the fireplace heat fan (if fitted)
-  Fan Level
Sets the level of the heat fan (if fitted)

SUPPORT

If you have any issues with a driver or installation please let us know by contacting Ultamation support on support@ultamation.com and please include as much detail about your issue as possible, such a recent processor error log.

LICENCE

This module (including software, images and any and all other associated assets distributed as part of the purchased download package) is licenced on a PER PROCESSOR basis.

A licence key is generated at the point of purchase and is linked at that time to specific information that MUST be provided at the time of purchase. A purchase should not be completed without correct information as refunds cannot be issued for errors or changes made to details following purchase.

The licence key for each device will be delivered via email along with links to download the module. There is no physical delivery.

The module is provided without any warranty with respect to the reliability of the controlled device or changes to device protocol. We will endeavour, through best efforts, to maintain the module's functionality and any bug fixes will be provided free-of-charge. Additional functionality may be released as a variation of this module and this will be a separate, purchasable, product.